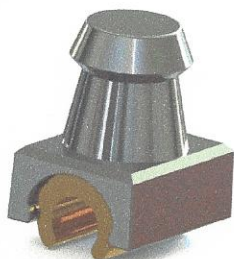


September 12, 2012

Hader Impression Coping (810017)

Instructions for Use



Description:

The Hader Impression Coping helps to hold the Hader Bar Processing Jig (810013) in the correct position in an impression. It is made from a stainless steel post/housing and a yellow nylon Hader Rider. If the round shape of a Hader Bar has been significantly modified by such factors as wear or over polishing, when an impression is made of the bar and when the Hader Bar Processing Jig (analog) is inserted into the impression, it may be difficult to get the processing jig to seat properly into the impression. This could mean that the processing jig is not in the same relative position as the bar is in the mouth. This error could mean that the Hader clips are processed in a slightly incorrect position, preventing the prosthesis from accurately seating in the mouth.

Instructions for Use:

1. Snap as many Hader Impression Copings onto the bar as space will allow. Make sure that all the posts are positioned so that they are projecting straight up (or down) off the bar (not rotated to one side of the round bar or the other).
2. Block out any space between the Hader Bar "skirt" and the tissue. This ensures that the impression material will not wrap around the bar, causing it to tear as it is removed. There are many block out materials that have been used successfully, however impression materials, such as Stern Vantage Quick Bite Vanilla (220131) works well. If you are using a polyvinyl siloxane impression material for the final impression, a light coating of petroleum jelly on the blocked out areas, will prevent sticking.
3. Syringe a light bodied impression material, (a polyvinyl siloxane is recommended) around each impression coping and into a custom tray. A stock tray, into which a preliminary putty impression has been made and relieved, can also be used. However, be sure to use light bodied material all the way along the ridges to ensure that the tissue in the edentulous areas was not displaced.
4. In some cases the impression copings will remain attached to the bar. If this happens, remove them from the mouth and reseat them into the impression. Cut the Hader Bar Processing Jig to fit the space. Seat the jig into the impression being sure that the jig is seated completely into the impression copings. Pour the stone model. The position of the bar will be accurately replicated on the model.
5. Before reuse, the nylon Hader Rider must be removed from the metal housing. The metal post/housing is sterilized in an appropriate manner, (autoclave, chemical, dry heat, etc.), and a new Hader Rider must be snapped into the housing, using the Hader Seating Tool (810025).