

TO ADD A SECOND, REMOTE MICRO PENCIL TO YOUR DELUXE MICRO SUCTION SYSTEM – Model 2100

INSTRUCTIONS

You will need the following items:

1. Deluxe Micro Pencil without Foot Control, #2101518
2. Recycling Switch, #7102255
3. 2-Feet Pressure Tubing, #7102126
4. Hose Grommet, #7102137

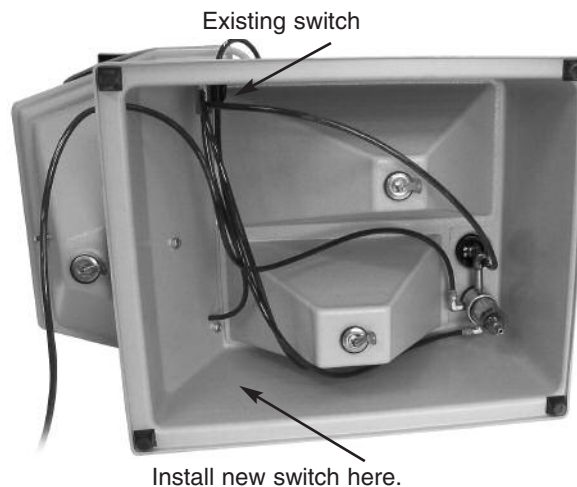
To mount the new switch, drill a 1/2" hole directly across from the existing air switch. Place the new switch in position. When you tighten the outside and inside lock nuts, be sure the outside nut covers the hinge-pin so that the switch lever does not work loose. Then tighten the inside nut to secure the switch in place.

Connect the pressure tubing as shown in the "New Configuration." Drill a second small hole for the 1/4" pressure tubing. The location where you drill this hole will depend on where you position the new Deluxe Micro-Pencil. The pressure tubing from the new pencil will connect to terminal A of the new switch as shown in the new configuration.

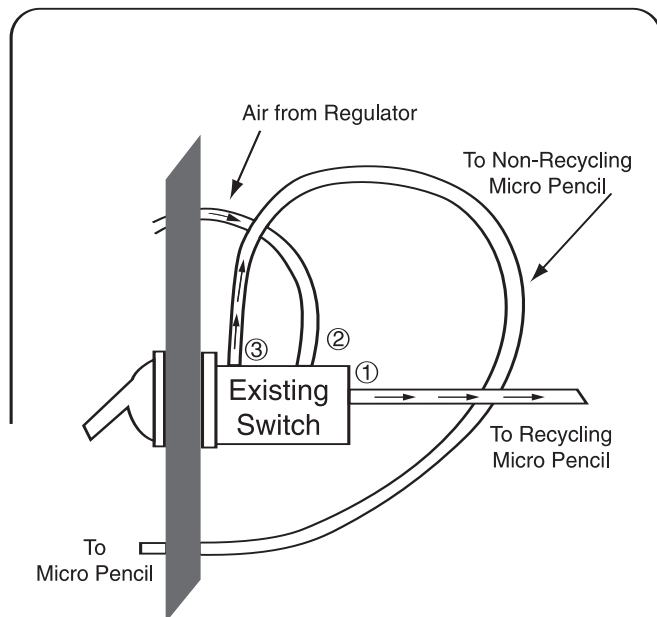
Also, drill a 7/8" hole in the cabinet for the new hand-piece and use the grommet for this hole. You may want to put a piece of colored tape on this hand-piece to differentiate it from the other one.

Adjust the filter/regulator on the new Deluxe Micro-Pencil for the desired pounds per square inch (PSI's).

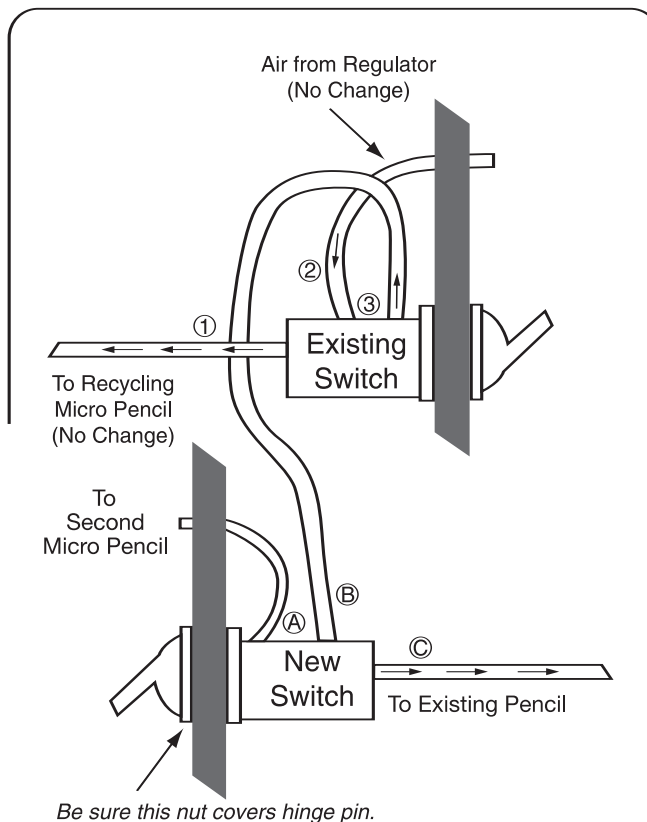
If you have any questions, please call our Customer Service Department at 800-243-9942.



Current Configuration



New Configuration



Order online at www.sterngold.com