



Sterngold Restorative Systems®

Quality Products, Support & Education

Sterngold continues to build upon a rewarding century-old relationship with restorative dentistry. As always, Sterngold looks to the future with the addition of Sterngold Restorative Systems®, which includes cements, provisional crown and bridge, reline and impression materials as well as laboratory products. In addition to providing quality products, Sterngold continues to set the standards in restorative dentistry for value, continuing education, customer support and innovation that its competitors strive to emulate.

 **Sterngold™**
www.sterngold.com

SternTek® Duplicating Dispensing Unit

A compact automatic mixing unit for accurate and easy mixing of 1:1 silicone duplicating materials

Advantages

- Continuous dispensing of ready mixed product
- Mixed thoroughly for bubble-free molds
- Several flasks can be filled at the touch of a button
- Eliminates waste and mess associated with hand mixing



SternTek Duplicating Dispensing Unit

1 Unit, 5 tips and 2 bottle adaptors

222017

Mixing Tips

50 pieces

220162

Material Reservoirs

Set of 2

222019



SternTek® Light Box with Timer

A light-polymerization unit using UVA light

Advantages

- Comes with timer
- UVA rays are emitted
- High light intensity
- Short curing times for custom trays or coating of denture bases

SternTek Light Box with timer 222034

SternTek® Duplicating Material

An extremely precise pourable duplicating material based on addition curing silicones

Advantages

- 1:1 mixing ratio
- Records finest details
- Does not stick to metal
- Releasable by compressed air
- High elasticity, high tear resistance
- Regular or Fast Set available
- Molds can be stored dry

SternTek Duplicating Material - Reg. Set

Base and Catalyst, 1 liter each bottle 222011

Base and Catalyst, 5 liter each bottle 222012

SternTek Duplicating Material - Fast Set

Base and Catalyst, 1 liter each bottle 222010



SternTek® Custom Tray & Base Plate Material

Advantages

- Prefabricated sheets
- Good malleability, easy to adapt, easy to trim
- Sufficient working time
- Uniform thickness
- Odorless
- Surplus material is reusable
- Quick setting time with usual light curing units
- No additional supports for handle
- Strong, not brittle, and not messy to grind

SternTek Custom Tray Material

50 sheets per box

Rose

222001

Blue

222002

Stern Tek Base Plate Material

50 sheets per box

Pink

222004

Sample

1 Pink, 1 Blue and 1 Rose

222003



Buy 10 Receive
FREE light box!

SternVantage® Putty

High viscosity polyvinyl siloxane kneadable pre-impression material for dual phase and double impression (regular) techniques

Advantages

- Snap-set behavior
- Does not stick to hands
- Thixotropic – Flows under slight pressure into the smallest gingival crevices to reproduce the finest details and stops flowing when pressure is released
- Efficient working time
- Fast setting when impression is in the mouth
- Hydrophilic – Precise impressions even in wet environment
- Excellent dimensional stability

- Odorless and tasteless
- Long shelf life
- Perfect fit of final restoration

SternVantage Putty 220001

Regular 2 jars @ 400g each (base and catalyst)



SternVantage® Putty	
Color	Blue
Mixing Ratios	1:1
Mixing Time (min:sec)	0:30
Working Time Including Mixing Time (min:sec)	1:30
Setting Time In The Mouth (min:sec)	3:30
Linear Dimensional Change (24h) (%)	≤0.4
Compression Set (%)	<0.7
Strain In Compression (%)	≤2.1
Recovery From Deformation (%)	>99.3
Shore A Hardness (%)	<75



InstaGums® Soft Tissue Material

Gingival Reproduction Material

Advantages

- Used to simulate natural tissue contour around implant abutments or crowns
- Applied directly from its automix cartridge
- Extremely strong, self-curing silicones
- Quick and easy with very little waste
- Resists tearing

InstaGums Soft Tissue Material 222025

1 cartridge @ 50ml, 15 intraoral tips, 15 mixing tips

Mixing Tips 220162
50 pieces

Intra-Oral Tips 220165
50 pieces

QuickLine™

Long Term Soft Reline Material



This long-term soft relining material can be directly applied from its automixing cartridge. The self-curing silicones allow for easy working, either using a direct or indirect lining procedure. Adhesion to the usual PMMA based materials for dentures is achieved by a specially developed highly active primer. The material is dispensed in a 1:1 ratio of catalyst and base and is light pink in color.

Clinical Applications

- Permanently soft relining material for complete and partial dentures
- Removal of pressure areas in the lower or upper jaw
- Support for healing processes in implantology (cushioning of implants and overdentures)
- Better adhesion by damming of the A-line (in the maxilla) and with flabby ridges

- Improved comfort when wearing with undercut areas at the alveolar ridges
- Elastic functional ridge on upper jaw dentures for improved adhesion
- Reproduce soft tissue contours on model work for fixed prostheses and implants

Features & Benefits

- Automixing for fast, easy and mess-free application
- Permanently soft – Increased patient comfort
- Self-curing
- Addition curing silicones
- Color stable
- Can be used on any standard resin for prosthetics
- Biocompatible – No methyl methacrylate
- Tasteless and odorless
- Requires no extra work in the laboratory

QuickLine™ Introductory Kit 220180

1 cartridge QuickLine™ (50 ml) , 1 Dispensing gun (1:1 ratio), 12 mixing tips, 1 bottle Primer (5 ml) , 2 bottles Varnish (base and catalyst), 10 ml each, 25 brushes, 1 brush holder, 1 mixing palette, 1 Silicone Trimming Bur.

QuickLine Refill 220181
1 cartridge (50ml), 12 mixing tips

Mixing Tips 220162
50 pieces

Intra-Oral Tips 220165
50 pieces

QuickLine Varnish Refill 220182

2 bottles – base and catalyst (10ml), 25 brushes, 1 mixing palette

QuickLine Primer Refill 220183
1 bottle (5ml)

Silicone Trimming Bur 811003

Dispensing Gun 220161
1:1 ratio

InstaTemp® Max

Bis-Acryl Composite for Temporary Crowns, Bridges, Inlays and Onlays



To eliminate polishing, purchase SternaVantage Varnish LC.

Indications

- Temporary crowns and bridges
- Long term temporaries
- Provisional inlays, onlays, and veneers

Advantages

- Exceptional adaptation and fit
- Low curing temperature - 100°F
- Low polymerization shrinkage – less than 1.0%
- Self curing
- Smooth surface after polishing
- Good biocompatibility
- Easily repaired with itself or with any other composite
- Contains no methyl methacrylate
- Odorless, tasteless, and no allergic reactions

- Outstanding color stability
- Five Shades A1*, A2*, A3.5*, B1*, Bleach*

InstaTemp Max Refills

1 cartridge @ 76g paste, 15 mixing tips

A1	220216
A2	220217
A3.5	220219
B1	220218
Bleach	220222

Mixing Tips

45 pieces

220220

Dispensing Gun

4:1 ratio

220221

InstaTemp Max **

Rubbery phase [min]	2:00 - 3:00
Remove from mouth	3:00
End of cure (incl. mixing) [min]	7:00
Diam tensile strength [MPa]	36
Compressive strength [MPa]	220
Water absorption [μ/mm3]	10
Barcol hardness (24 h, wet)	35
Heat development during setting [°F]	100
Shades available	A1, A2, A3.5, B1, Bleach

Setting Time on Model:

Rubbery phase [min]	2:00 - 3:00
Remove from model [min]	3:00
End of cure (incl. mixing) [min]	7:00

SternaVantage Varnish LC

30 ml bottle

221001

Advantages of the Automix System

- No hand mixing necessary
- Can be applied directly into the impression/matrix
- Homogeneous material quality
- No air bubbles
- Autoclavable dispensing guns
- Small mixing tips reduce waste

* Corresponds to Vita-colors, Registered Trademark of Vita Zahnfabrik

** Detailed instructions included with products.

SternaVantage® Varnish LC

Unfilled light cure resin which produces a high gloss, hard surface with no polishing necessary

SternaVantage Varnish LC is a light cure one-component surface coating material that cures without a smear layer caused by oxygen inhibition. It has been developed especially for cases where the surface of acrylate materials after polymerization exhibits an undesired or intolerable smear layer. It can also be used in cases where increased surface hardness is desirable, or where the oral environment must be protected from elution of monomers out of freshly polymerized materials. Treatment of polymerized composite surfaces,

custom trays or temporary crowns and bridges with Varnish LC yields a hard, high gloss, solvent and stain resistant, ultra dry finish with a smooth surface. Plaque formation and deposition of calculus is minimized. Varnish LC is cured with a common dental halogen light unit or in an UV or stroboscopic light unit.

Advantages

- Solvent and stain resistant
- Ultra dry finish with a smooth surface



SternaVantage Varnish LC

30ml bottle

221001

SternVantage® Quick Bite Vanilla

SternVantage Quick Bite Vanilla is a vanilla scented, automix, thixotropic bite registration material based on addition curing polyvinyl siloxane.

Advantages

- Applied directly onto the teeth
- Allows a very quick bite registration (fast setting)
- Hydrophilic – Compatible with moist surfaces
- Minimum resistance to the patient's jaw closure
- Produces consistently accurate centric relation records
- Enables the dentist and lab technician to seat models and dies easily into the bite registration
- Very rigid when set and can be milled and cut extremely well
- Can also be used as blockout material for attachments
- 2 year shelf life

Quick Bite Vanilla 220131

2 cartridges @ 60g each, 6 mixing tips, 6 contouration tips

Mixing Tips 220162

50 pieces

Contouration Tips 220167

50 pieces

Dispensing Gun 220161

1:1 ratio



SternVantage® Quick Bite Vanilla

Color	White
Mixing Ratios	1:1
Mixing Time (min:sec)	Auto Mixing
Working Time Including	
Mixing Time (min:sec)	0:30
Setting Time In The Mouth (min:sec)	1:15
Linear Dimensional Change (24h) (%)	
Compression Set (%)	
Strain In Compression (%)	≤1.0
Recovery From Deformation (%)	
Shore A Hardness (%)	≥90

TempoLok™ NE

Automix Temporary Cement Non-Eugenol



TempoLok™ NE is an automixing zinc oxide cement which is easy to process. It is used for the attachment of temporary crowns, bridges, inlays, onlays and implant prosthetics. It can also be used as a securely sealing protective cover for preparations to be restored at a later time.

Advantages:

- Low film thickness (<10µm) to ensure best adaptation and fit. Withstands solution in the wet environment

- Flows easily to allow for precise placement of both the cement and the temporary
- Remains flexible under the temporary for easy removal without damage to the tooth or adjacent tissue
- Quick and complete setting for easy clean-up, reduces waiting time for both dentist and patient
- TempoLok™ NE for use with provisionals when a resin or resin reinforced glass ionomer will be used for the final restoration

TempoLok™ NE (Syringe) 220265

Syringes @ 5ml, 20 Mixing Tips

Mixing Tips (for syringe) 811918

15 pieces

TempoLok™ NE (Cartridge) 220282

1 cartridge @ 118g, 50 mixing tips

Mixing Tips (for cartridge) 220301

50 pieces

Dispensing Gun 220161

1:1 ratio

ERA® Lock Cement

An auto-curing, filled, composite resin cement

Advantages

- Specially formulated to provide a high strength bond with titanium components
- ERA Lock is also eminently suitable for use with dentin bonding agents in the final cementation of inlays, crowns, bridges and intraradicular posts.

ERA Lock Cement Automix 811917

10 g, 15 mixing tips

ERA Lock Cement 811918

15 mixing tips

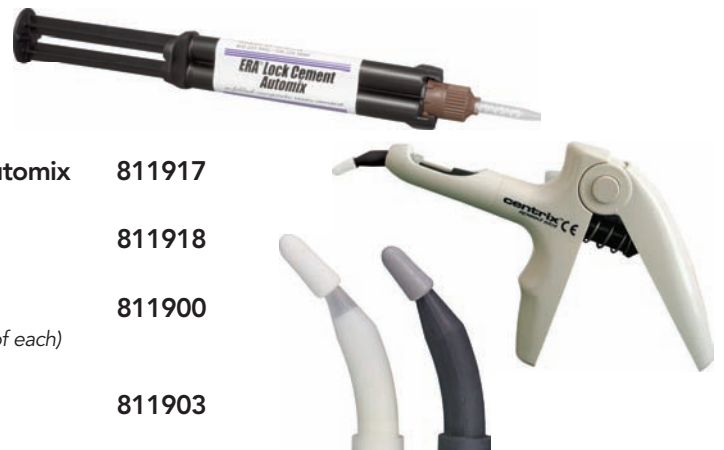
ERA Lock Cement 811900

0.5 g Base and Catalyst (1 of each)

ERA Lock Cement

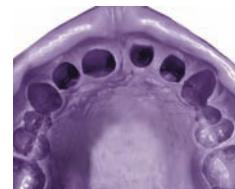
Dispensing Gun

811903



SternVantage® Monophase

Medium to heavy viscosity, polyvinyl siloxane precision impression material in automixing cartridges



Advantages

- For monophase functional, reline impressions, crowns, bridges, inlay and onlay impressions
- Hydrophilic – Precise impressions even in wet environment
- Thixotropic – Flows under slight pressure into the smallest gingival crevices to reproduce the finest details. Stops flowing when pressure is released
- Dimensional stability gives excellent fit of final restoration
- Easy removal from the mouth and casts making it convenient for patients and dentists

SternVantage Monophase 220121
2 cartridges @ 60g each, 12 mixing tips, 12 intra-oral tips

Mixing Tips 220162
50 pieces

Intra-Oral Tips 220165
50 pieces

Dispensing Gun 220161
1:1 ratio



SternVantage® Monophase

Color	Purple
Mixing Ratios	1:1
Mixing Time (min:sec)	Auto Mixing
Working Time Including Mixing Time (min:sec)	1:30
Setting Time In The Mouth (min:sec)	2:30
Linear Dimensional Change (24h) (%)	≤0.5
Compression Set (%)	<0.5
Strain In Compression (%)	≤3.5
Recovery From Deformation (%)	>99.5
Shore A Hardness (%)	<66

EZ PickUp™

Tissue-colored, self-curing composite attachment processing material for any attachment

Same proven and trusted formula;
EZ new name.

Advantages

- Odorless & Tasteless.
- Low curing temperature over traditional acrylics.
- Less than 1 percent shrinkage resulting in a more accurate and complete pickup of the attachment.
- EZ PickUp™ material will not irritate freshly sutured tissue like methyl methacrylate will.
- Can be used to pick up any attachment.

EZ PickUp™ Syringe and Tips 220235
1 syringe @ 15 grams and 15 tips

EZ PickUp™ Syringe, Tips & SternVantage® Varnish LC 220237
1 syringe @ 15 grams, 15 tips and 1 bottle of 5 ml Varnish LC

EZ PickUp™ Tips 220233
15 tips

SternVantage® Varnish LC 221001
30 ml bottle



EZ PickUp™ will only chemically bond to acrylic if a primer is used. Use SternVantage® Varnish LC as a primer for acrylic, listed on Page 3

SternVantage® Quick Light Body

Fast setting low viscosity polyvinyl siloxane automixing correction impression material for crown, bridge, implant, prosthetics, inlay and onlay impressions

SternVantage® Light Body

Automix low viscosity polyvinyl siloxane correction impression material for crown, bridge, implant, prosthetics, inlay and onlay impressions



Advantages

- Easy and clean handling
- Constant mixing ratio
- Precise impressions
- Excellent dimensional stability
- Convenient for patient and dentist
- Hydrophilic – Precise impressions even in wet environment
- Thixotropic – Flows under slight pressure into the smallest gingival crevices to reproduce the finest details and stops flowing when pressure is released
- Excellent fit of final restoration

SternVantage® Quick Light Body 220111
2 cartridges @ 60g each, 12 mixing tips, 12 intra-oral tips

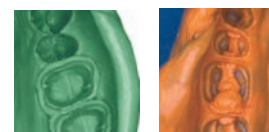
SternVantage® Light Body 220101
2 cartridges @ 60g each, 12 mixing tips, 12 intra-oral tips

Intra-Oral Tips 220164
50 pieces

Mixing Tips 220163
50 pieces

Dispensing Gun 220161
1:1 ratio

SternVantage®	Light Body	Quick Light Body
Color	Orange	Green
Mixing Ratios	1:1	1:1
Mixing Time (min:sec)	Auto Mixing	Auto Mixing
Working Time Including Mixing Time (min:sec)	2:15	1:30
Setting Time In The Mouth (min:sec)	3:30	2:15
Linear Dimensional Change (24h) (%)	≤0.4	≤0.4
Compression Set (%)	<0.4	<0.4
Strain In Compression (%)	≤3.5	≤3.5
Recovery From Deformation (%)	>99.6	>99.6
Shore A Hardness (%)	<52	<52



Sterngold® Restorative Systems®

Order online at www.sterngold.com

23 Frank Mossberg Drive • Attleboro, MA 02703 USA

Customer Service 800-243-9942 or 508-226-5660 • Fax: 800-531-2685 • International Fax: 508-222-3593