

Stern SNAP[®] and SNAP[®] ANGLED

Overdenture Abutments

Introducing the new Stern SNAP[®] and SNAP[®] Angled Overdenture Implant Abutment System, compatible with all popular implant systems. Its Innovative Two-piece design allows the SNAP[®] Angled to perform True Angle Correction of up to 20 degrees on divergent implants, without the need to rely on a hinging attachment. The System features a New Maximum Durability Cap, (available in 1lb, 2lb, and 3lb,) that does not require a housing, and the CM LOC[®] retention caps, which have a pink colored titanium housing and 4 Pekkton[®] inserts, (available in 1 lb., 2 lb., 4 lb., and 6 lb.). The Stern SNAP[®] is an Innovative, Predictable, and Economical solution for stabilizing your patients' denture.

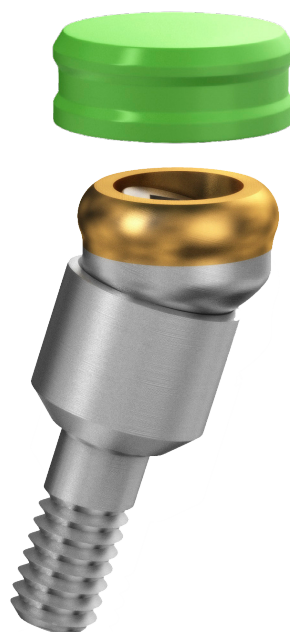
- Works with All Major Implant Systems
- True Angle Correction up to 20 degrees
- New Maximum Durability Cap: Tested to 250,000 Cycles

PEKKTON[®] attachments are part of the CM[®] LOC system.
CM LOC[®] is a registered trademark of Cendres+Métaux SA Switzerland

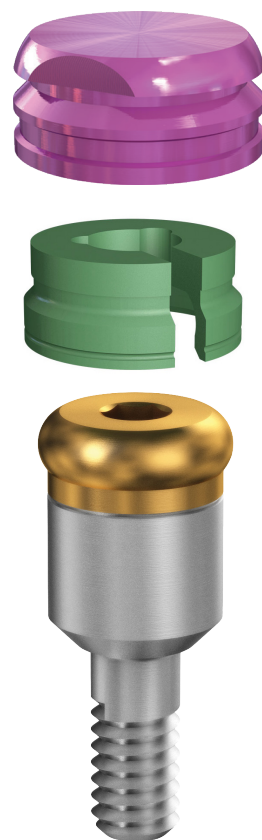


Your retention choices

***Metal-Free Version**
with maximum durability cap



***Metal Version**
with titanium housing and PEKKTON[®] Insert(s)



*Available for Straight and Angled

INNOVATIVE IMPLANT ATTACHMENT SYSTEMS



Manufactured By:
23 Frank Mossberg Drive
Attleboro, MA 02703 USA
www.sterngold.com

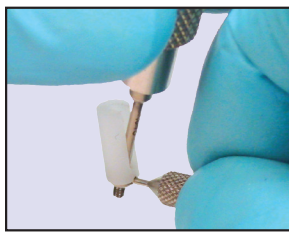
Removable Prosthetic Procedure - SNAP® & SNAP/ANGLED



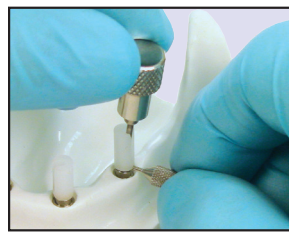
1 If the implant divergence is 16° or less (8° per abutment) from the desired path of insertion of the prosthesis, the straight Stern SNAP® Abutments may be used. They are made to fit more than 180 implants and come in various tissue cuff heights. Screw the one-piece abutments onto each implant. Tighten the abutment into the implant to 20 Ncm using a .050" hex driver.



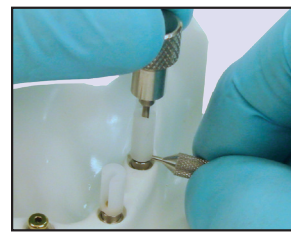
2 If the total divergence of the implants is greater than 16° (or greater than 8° on any one implant) from the desired path of insertion of the prosthesis, the angle correction Stern SNAP® Attachment must be used. Each angle correction Stern SNAP® Attachment will correct up to and including 17° of divergence (max. of 34° between two implants). Select the proper Abutment base that matches the prosthetic platform of the implants being restored. Screw the appropriate tissue cuff height Abutment base into each implant. The abutments are tightened to 30 Ncm using the flat bladed Screwdriver.



3 While holding the Stern SNAP® Handle insert the .050" hex driver through the slot in the Stern SNAP® Alignment Post and engage the head of the screw.



4 Position the attachment onto the hemispherical occlusal surface of the abutment and begin to turn the screw into the abutment.



5 Using the Stern SNAP® Handle, move the attachment until the Alignment Post aligns with the desired path of insertion of the prosthesis. Hand tighten the screw.



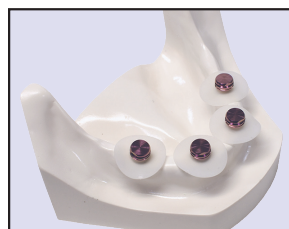
6 Gently pull the Alignment Post off of the attachment. While holding the Handle to prevent movement, torque the screw to 20 Ncm. Unscrew the Stern SNAP® Handle.



7 Any exposed parts of the abutment must be blocked out. Block out spacers or thin rubber dam can be very effective.



8 Place a Stern SNAP® Retention Cap onto each attachment. No metal housing is needed with this new, special, long lasting plastic cap. The yellow cap provides light retention (1 lb.). The green cap will be most often used (2 lbs.). The brown cap provides stronger retention (3 lbs.).



9 Or place a CM LOC® Titanium Housing and Blockout Spacer onto each attachment. A white processing insert comes inside the housing. The Pekkton® inserts provide 4 levels of retention, yellow-extra low, red-low, green-medium, blue-strong.



10 Prepare a recess in the denture over each Retention Cap or housing. Create mechanical undercuts in the side walls of each recess.



11 Use SternVantage® Varnish to prime the recesses and light cure.



12 Add composite (EZ PickUp®) over the top and sides of the Retention Caps or housings.



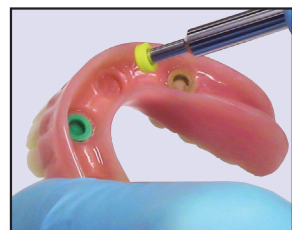
13 Place additional resin in the recesses of the over-denture.



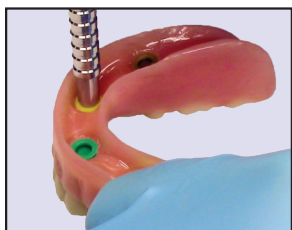
14 Passively seat the over-denture, ensuring that the tissue is not displaced.



15 Fill any defects with resin. Excess EZ PickUp® may be easily removed from the unvarnished areas.



16 The retention caps can easily be changed when necessary. The Stern SNAP® Insertion/Removal Tool is a double ended tool. The removal end has the longer neck and has sharp edges. The removal tool is pushed into the retention cap. Pull back to remove the cap from the denture. The cap may be removed from the tool by bending the tool sideways.



17 Place a new cap onto the insertion end of the tool, which is shorter and smooth. Push the new cap firmly into the recess in the denture and pull the tool back out. The cap will remain in the denture.



18 The Pekkton® retention inserts can easily be changed using the CM LOC® Multi-Tool. Place an appropriate colored Pekkton® insert onto the end of the tool marked "IN". Push the insert straight into the housing until it clicks. The other end of the tool is marked "OUT". To remove an insert lightly press the OUT end just inside the circumference of the metal housing until the insert disengages. Pull straight out.