

Dental Implant Catalog

TABLE OF CONTENTS

Return Policy and Company Certifications	4
Sterngold Implants Surface – Treatment	5
PUR® Implant System	6
PUR® Implant System Surgical Kit and Instruments	7-9
PUR® Implant System Prosthetics	10-13
PUR® Surgical Protocol	14-18
TRU® Implant System	19
TRU® Implant System Surgical Kit and Instruments	20-22
TRU® Implant System Prosthetics	23-28
TRU® Surgical Protocol	29-32
Stern IC Implants	33
Stern IC Surgical Instruments and Components	34
Stern IC Implant System Prosthetics	35-38
Stern EX Implant System	39
Stern EX Surgical Instruments and Components	40
Stern EX Implant System Prosthetics	41-46
MOR® Implant System	47
MOR® Implant System Surgical Kit and Instruments	48
MOR® Implant System Prosthetics	49-51
ERA Implant® System	52
ERA Implant® Surgical Instruments and Components	53-54
ERA Implant® Prosthetics	55-58
Surgical Motors	59
Contact Information	60



Sterngold Dental, LLC is well recognized within the dental industry as a leader in the manufacturing of high-quality, innovative, clinically proven dental solutions since its inception in 1897. Sterngold demonstrates its commitment to developing evidence-based and scientifically proven products through research and development, manufacturing, regulatory, and quality control processes.



Sterngold's mission is to offer the dental professional a wide array of clinical implant solutions to efficiently and effectively provide treatment for the vast variety of patient indications presented to them. We strive to continue innovation within our implant line to meet the evolving needs of our customers by focusing on predictable solutions, through ongoing and continuous surgical and restorative research, and product development. Sterngold Dental Implants have been a fixture in the market since 1993 and are developed and manufactured in the United States.

All products are FDA 510K approved and ISO Certified.

RETURN POLICY

Please look over your invoice and products before opening the package.

All returns must have prior authorization from Sterngold. Please call our Customer Service Department at 800-243-9942 to obtain a return authorization number and clearly write the issued number on the outside of the Shipping package.

All unopened products must be in resalable condition. A copy of the invoice or packing slip must be enclosed with the return. Return freight costs are the Customer's responsibility. Sterngold is not responsible for any lost or damaged products returned to us. Please allow 2 to 4 weeks for return processing. No credit will be provided for freight costs on original invoice.

ATTACHMENTS, IMPLANTS AND CONSUMABLES:

No returns are accepted after 30 days from purchase date. Any opened products will not be accepted for credit. Any unopened product returned within 30 days of the invoice date will be subjected to a 20% restocking fee.

ALLOYS:

Our 30-day product guarantee on all alloys permits the return of metal in quantities of 5-ounces or less. When returned within 30 days, credit will be issued at the original invoice price for the quantity of material returned (including buttons). Unopened metal returned within 30 days from delivery date will be issued credit at 20% off the original invoice price or intrinsic based on the current market, whichever is lower.

CENDRES METAUX ATTACHMENTS AND CONSUMABLES:

No returns are accepted after 30 days from purchase date. Any unopened product returns will be subjected to a 20% restocking fee. Opened CM attachments and consumables will not be accepted for credit.

OSHA REGULATIONS:

To comply with Federal Regulations and Sterngold's infection control program, all items not returned in their original, unopened packaging must be disinfected and shipped in compliance with current OSHA rules. Failure to follow OSHA regulations will result in your package being returned at your expense. Items which can be used in the mouth must be disinfected and repackaged in a heat sealed envelope labeled with a notice of disinfection.

COMPANY CERTIFICATIONS

Sterngold Dental, LLC operates under a strict quality system which is compliant with the US Food & Drug Administration's Quality System Regulations and CGMP's. With a continued focus of producing and delivering superior products and services, Sterngold is EN ISO 13485:2012, ISO 13485:2003 CMDCAS, MHLW Ministerial Ordinance No. 169 and MDD 93/42-EEC certified. Our alloys are certified by the American Dental Association (ADA) and produced under the Sterngold Dental, LLC quality system.

In addition to the United States, we also have approval to market our products in Canada, Brazil, Colombia, Taiwan, Europe, Korea, and Japan.

Sterngold Dental LLC's Quality Policy Statement:

- Provide our customers with consistent, superior product, components, and accessories at competitive prices, on time.
- To ensure that our products and services meet or exceed the requirements of the Quality System guided by EN ISO 13485:2012, ISO 13485:2003 CMDCAS, MDD 93/42/EEC, MHLW Ministerial Ordinance No. 169 and the Food and Drug Administration's QSR and Good Manufacturing Practices (GMP).

The surface of bone and dental implants plays an important role in osteoblast adhesion and bone growth. Many factors affect the quality of osseointegration, including chemical composition and surface morphology. Studies have shown that roughened surfaces are more favorable for bone formation and faster osseointegration compared to implants with smooth surfaces.

Roughness is measured with an average roughness (Ra), while the most commonly used parameter for describing roughness is calculated in microns. The rough surfaces produced by grit-blasting have irregular geometries with Ra value of $3.0\text{ }\mu\text{m}$, which is considered optimal for the osseointegration process.

The SGE surface is produced using a large-grit sandblasting technique that generates a macro-roughness on the titanium surface followed by an acid-etch bath, which produces the micro-roughness. This promotes cell attachment as seen in the scanning electron microscope (SEM) picture of the SGE surface of Sterngold implants in figures 1 through 9.

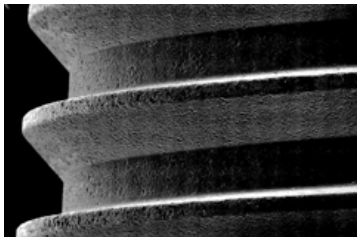


Figure 1 TRU®/PUR® Dental Implant
SEM – Scanning Electron Microscopy

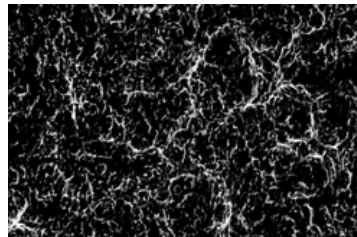


Figure 2 TRU®/PUR® Dental Implant
SEM – Scanning Electron Microscopy

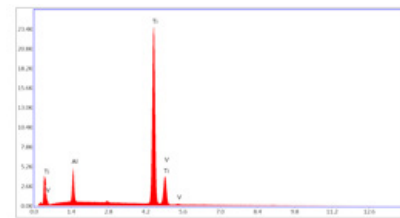


Figure 3 TRU®/PUR® Dental Implant - EDS
EDS - Energy Dispersive X-ray Spectroscopy

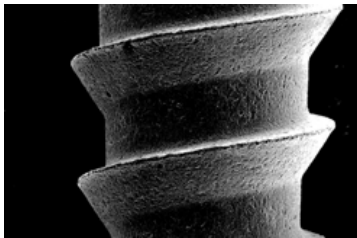


Figure 4 MOR® Dental Implant
SEM – Scanning Electron Microscopy

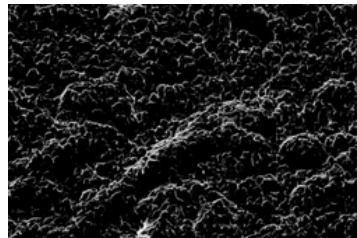


Figure 5 MOR® Dental Implant
SEM – Scanning Electron Microscopy

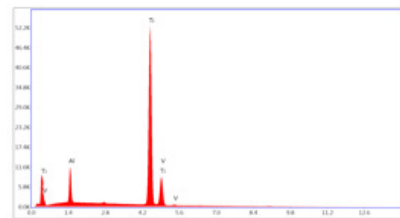


Figure 6 MOR® Dental Implant
EDS - Energy Dispersive X-ray Spectroscopy

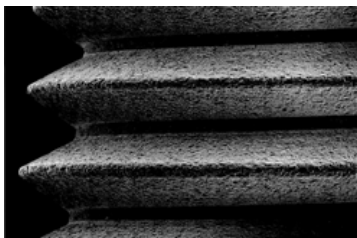


Figure 7 Stern EX Dental Implant
SEM – Scanning Electron Microscopy

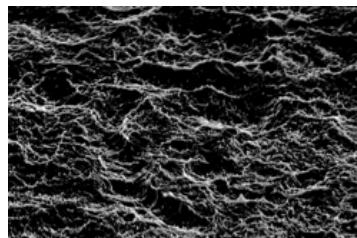


Figure 8 Stern EX Dental Implant
SEM – Scanning Electron Microscopy

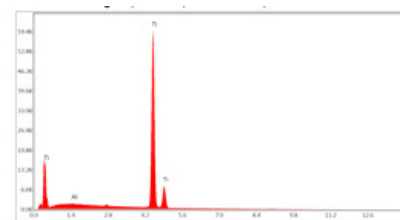



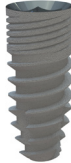

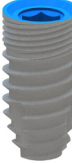
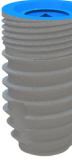
Figure 9 Stern EX Dental Implant
EDS - Energy Dispersive X-ray Spectroscopy

The PUR® implant system is designed to be simple to use, while also providing predictable clinical results. The precision manufacturing of the PUR® produces the highest quality implants and prosthetic components at an excellent value to the clinician.

The implant body design is a self-tapping screwtype, with a double lead thread pattern, and micro threads at the top, making it ideal for achieving immediate stability. The PUR® features the SGE surface treatment for expedited osseointegration. The implant does not require a mount and is delivered to the mouth directly with the Implant Driver. The bone-level, internal connection PUR® Implant is substantially equivalent to the Zimmer® Tapered Screw-Vent® connection.

- Simple, Predictable, Reliable
- Quality at a Value Price
- Provides Strong Initial Stability
- Diameters: 3.2mm, 3.5mm, 4.3mm (NP) Silver**
- Diameters: 5.0mm, 6.0mm (RP) Blue**
- Lengths of 8, 10, 12, 14mm
- SGE Surface Treatment
- Mountless Delivery
- Zimmer® Tapered Screw-Vent® connection

PUR®

					
Body Diameter	3.2mm	3.5mm	4.3mm	5.0mm	6.0mm
Prosthetic Connection	3.2mm (NP)	3.5mm (NP)	3.5mm (NP)	4.5mm (RP)	4.5mm (RP)
8mm Length	901382	901356	901360	901365***	901369***
10mm Length	901383	901357	901361	901366***	901370***
12mm Length	901390	901358	901362	901367***	N/A
14mm Length	901391	901359	901363	N/A	N/A

All implants come with cover screw

* Zimmer® Screw-Vent® is a registered trademark of Zimmer® Dental, Inc.

**5.0mm available in lengths of 8, 10, and 12mm

6.0mm available in lengths of 8, and 10mm

*** DENOTES ANODIZED PART AND COVER SCREW



TRU® / PUR® SURGICAL KIT

905299

Kit includes instruments to place PUR® and TRU® Implants

Kit contents: Lance Drill, 2.0, 3.0, 3.8, 4.5, 5.5mm Drills, 3.5, 4.3, 5.0, 6.0mm Bone Taps, Torque Wrench, Parallel Pin (4), Drill Extender, Thumb Knob, .050" Hex Latch Driver, .050" Hex tool, Long Driver.

PUR® Add on Kit:

905331

PUR® Implant Driver-Latch

PUR® Implant Driver Wrench-Long

PUR® 3.2mm Kit Supplement

905283

Lance Pilot Drill, 2.0mm drill, 2.7mm drill, 3.0mm Drill, PUR 3.2 Tap, & PUR Implant Driver- Latch



Lance Pilot Drill

903014

- The Lance Pilot drill is used to penetrate the cortical bone in order to mark the site and to guide the subsequent drills.



TRU® / PUR® 2.0mm Pilot Drill 6, 8, 10, 12, 14mm **905288**



SURGICAL DRILLS

- Useful depth markings are on the drills (6, 8, 10, 12, and 14mm).
- Irrigate to control temperature.
- All drilling should be performed at low speeds (1000 to 1500 RPM) to maintain bone temperature as low as possible.

TRU® / PUR® 3.0mm Twist Drill 6, 8, 10, 12, 14mm

905289

TRU® / PUR® 3.8mm Twist Drill 6, 8, 10, 12, 14mm

905290

TRU® / PUR® 4.5mm Twist Drill 6, 8, 10, 12, 14mm

905291

TRU® / PUR® 5.5mm Twist Drill 6, 8, 10, 12, 14mm

905292



PARALLELING PIN 2.0mm/3.45mm 905282

- The Paralleling Pins can be placed into the osteotomy to guide the drilling of subsequent holes.



BONE TAPS

- An instrument for cutting a screw thread inside the osteotomy.

PUR® 3.2mm Tap

905256

TRU®/PUR® 3.5mm Tap

905293

TRU®/PUR® 4.3mm Tap

905294

TRU®/PUR® 5.0mm Tap

905296

TRU®/PUR® 6.0mm Tap

905297



IMPLANT DRIVER, WRENCH
Long 905263
Short 905322



PUR® IMPLANT DRIVER - LATCH 905287



DRILL EXTENDER 905280
• Increases length of drill by 18mm.
• Attaches to standard latch type handpiece



.050 HEX" LATCH DRIVER 905023
• Used to install Sterngold's surgical and prosthetic components.
• Excellent for difficult to reach areas.



.050" HEX TOOL LONG 905229
.050" HEX TOOL SHORT 905228



THUMB KNOB 905213
• Used for hand tightening of torque wrench tools.



GRADUATED TORQUE WRENCH 905738
• Features both a torque and ratchet function.
• Torque to 10-70Ncm



LINDEMANN DRILL

903015

- Placement of vertical groove to facilitate planned implant orientation
- Enlargement of crestal 1/3 of osteotomy
- Angle correction following 2mm twist drill



DENSE BONE DRILLS

- For uniformly dense bone.

3.25 mm Dense Bone Drill	6, 8, 10, 12, 14	905336
4.05 mm Dense Bone Drill	6, 8, 10, 12, 14	905337
4.75 mm Dense Bone Drill	6, 8, 10, 12, 14	905338
5.75 mm Dense Bone Drill	6, 8, 10, 12, 14	905339



CORTICAL BONE DRILLS

- For superior cortical bone.

3.2 mm Cortical Drill	905522
3.5 mm Cortical Drill	905523
4.3 mm Cortical Drill	905524
5.0 mm Cortical Drill	905525
6.0 mm Cortical Drill	905526

* DENOTES ANODIZED PART



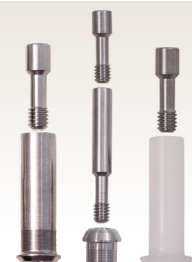
STRAIGHT ABUTMENTS (TITANIUM)

Narrow Platform

1.5mm cuff **904773**
3.0mm cuff **904774**

Regular Platform

1.5mm cuff **904775***
3.0mm cuff **904776***



*NON-HEXED UCLA ABUTMENTS

Narrow Platform

Titanium **904761**
Gold **904765**
Plastic **904779**

Regular Platform

Titanium **904763***
Gold **904767**
Plastic **904780**

*.050" Prosthetic Screw included.



*Hexed UCLA Abutments

Narrow Platform

Titanium **904760**
Gold **904764**
Plastic **904777**

Regular Platform

Titanium **904762***
Gold **904766**
Plastic **904778**

*.050" Prosthetic Screw included.



*WAXING SCREWS

Short, Hex
Long, Hex

904654
904655

*Install with .050" Hex Driver.



*UCLA WAXING SLEEVES

Narrow Platform

Hexed **904781**
Non-Hexed **904783**

Regular Platform

Hex **904782**
Non-Hexed **904784**

*.050" Prosthetic Screw included.



IMPRESSION COPINGS

Impression Coping (NP) **904771**
Impression Coping (RP) **904772***
Stern SNAP® Impression Coping **904961**
ERA® N/E Impression Coping (NP) **904283**
ERA® Micro Overdenture Impr.Coping **811236**



HEALING ABUTMENTS .050"

Narrow Platform

3.0mm **901446**
5.0mm **901448**

Regular Platform

3.0mm **901447***
5.0mm **901449***



ANGLED ABUTMENTS*

15° Ti Esthetic (NP) **907121**
15° Ti Esthetic (RP) **907122**

*INCLUDES PROSTHETIC SCREW



IMPLANT ANALOGS

Narrow Platform (NP) **904533**
Regular Platform (RP) **904534**
Stern SNAP® Analog **904962**
ERA® Micro Ovd. Processing Jig **811042**
ORA Processing Jig **811001**

* DENOTES ANODIZED PART



MULTI-UNIT ABUTMENTS*

0° 1mm H (NP)	907126
0° 2mm H (NP)	907127
17° 2mm H (NP)	907123
17° 3mm H (NP)	907124
30° 3mm H (NP)	907125

* Angled Multi-Unit Abutments include Angled Abutment Screw.
Prosthetic screw sold separately.



MULTI-UNIT ABUTMENT ANALOG 907129



***MULTI-UNIT TEMPORARY ABUTMENT Ti** 907133

*.050" Prosthetic Screw included.



***MULTI-UNIT TEMPORARY. HEALING CAP** 907132

*.050" Prosthetic Screw included.



***MULTI-UNIT IMPRESSION COPING (OPEN TRAY)** 907130

*.050" Guide Pin included.



MULTI-UNIT PROSTHETIC SCREW 907131



ANGLED MULTI-UNIT ABUTMENT SCREW 907128



SNAP® ONE-PIECE IMPLANT ABUTMENTS (Torque to 20 Ncm)

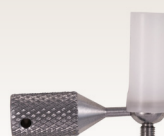
Narrow Platform		Regular Platform	
1mm Cuff	904560	1mm Cuff	904564
2mm Cuff	904561	2mm Cuff	904565
3mm Cuff	904562	3mm Cuff	904566
4mm Cuff	904563	4mm Cuff	904567



STERN SNAP® ABUTMENT BASES* (Torque to 30 Ncm)

Narrow Platform		Regular Platform	
2.5mm Cuff	904925	3.0mm Cuff	904953
3.5mm Cuff	904926	4.0mm Cuff	904954
4.5mm Cuff	904927	5.0mm Cuff	904955

*Choose one and add 904123 below for each abutment base ordered and appropriate retaining caps pictured below .



SNAP® ANGLED COMPLETE ATTACHMENT

- When ordering the Stern Snap Angled attachment, you must also choose an Abutment Base for the appropriate Implant System. The Stern Snap screws into the Abutment Base to provide a connection to an overdenture.
- Torque to 20Ncm

904123

SNAP® RETAINING CAPS-METAL FREE

Assortment	904130
Yellow	904134
Green	904135
Brown	904136



LOC® PEKKTON® INSERTS* (METAL HOUSING)

Basic Set	05003082
Yellow (4)	05001314
Red (4)	05001315
Green(4)	05001316
Blue (4)	05001317
White (4,Processing)	05001328

*Retention inserts come in a variety of retention levels.
Yellow= Extra low, Red=Low, Green=Medium and Blue=Strong



ORA IMPLANT ABUTMENTS

Narrow Platform		Regular Platform	
1.0mm Cuff	904340	1.0mm Cuff	904345
2.0mm Cuff	904341	2.0mm Cuff	904346
3.0mm Cuff	904342	3.0mm Cuff	904347
4.0mm Cuff	904343	4.0mm Cuff	904348
5.0mm Cuff	904344	5.0mm Cuff	904349



ERA® IMPLANT ABUTMENTS (MICRO)

Narrow Platform		Regular Platform	
0.5mm Cuff	812873	0.5mm Cuff	812881
2mm Cuff	812874	2mm Cuff	812882
3mm Cuff	812875	3mm Cuff	812883
4mm Cuff	812792	4mm Cuff	812794
5mm Cuff	812876	5mm Cuff	812884
6mm Cuff	812813	6mm Cuff	812815



*SCAN BODIES AND TI BASES

Narrow Platform	
PUR® Scan Body	904790
PUR® Ti Base	904792

Regular Platform	
PUR® Scan Body	904791
PUR® Ti Base	904793

*.050" Prosthetic Screw included.

EZ PickUp® Attachment Processing Material

Tissue-colored, automixing, self-curing attachment processing material.

- Odorless.
- Low curing temperature.
- Less than 1 percent shrinkage resulting in a more accurate and complete pickup of the attachment.
- When used with the ERA Implant System, it will not irritate freshly sutured tissue like methyl methacrylate will.
- Can be used to pick up any attachment.
- EZ PickUp® will chemically bond to acrylic only if a primer is used. Use SternVantage® Varnish LC as a primer for acrylic.



EZ PickUp®, Syringe, Tips & Varnish

1 syringe @ 15 grams, 15 Tips and 5.0ml Varnish

220237

EZ PickUp®, Syringe & Tips

1 syringe @ 15 grams and 15 Tips

220235

EZ PickUp® Tips (15)

220233



SternVantage® Varnish LC 5ml

220232

SternVantage® Varnish LC is a light cure one-component surface coating material based on acrylates and cures without a smear layer caused by oxygen inhibition.

- Solvent and stain resistant.
- Ultra-dry finish with a smooth surface.
- Produces a high gloss and hard surface with no polishing necessary.





Quickline® Soft-Reline material

QuickLine®, the long-term soft relining material, can be directly applied from its automix cartridge. The self-curing silicones allow for easy working, either using a direct or indirect lining procedure. Adhesion to the usual PMMA based materials for dentures is achieved by a specially developed highly active primer.

- Biocompatible, no methyl methacrylate.
- Tasteless and odorless.
- Requires no extra work in the laboratory.
- Automixing cartridge delivery system for fast, easy and mess-free application.
- Permanently soft for increased patient comfort.
- Self-curing.
- Color stable.
- Can be used on any standard resin for prosthetics.
- Dispenses with 1:1/2:1 Dispensing Gun.

Quickline® - Introductory Kit 220180

1 cartridge (50 ml) QuickLine, 12 mixing tips, 2 bottles (10ml) (base and catalyst) Varnish, 1 bottle Primer (5 ml), 25 brushes, 1 mixing palette

Quickline® refill 220181

1 cartridge QuickLine™ @ 50 ml, 12 mixing tips

Quickline® primer 220183

1 bottle Primer, 5 ml

- Easy to use.
- Quick set up solvent evaporates in 1 minute.
- Provides adhesion between PMMA based material used for dentures and self-curing silicone.

Quickline® Varnish 220182





































2 bottles (base and catalyst), 10 ml each, 25 brushes, 1 mixing palette

- Easy to use.
- Provides a glossy and lasting surface.
- Reduces plaque retention.
- Reduces stain and odor build-up.
- Reapplicable for extended use.
- Quick drying time (5 minutes).

Quickline® mixing tips (50) 220162



PUR™ DRILL SEQUENCE

Implant Diameter	Lance Drill 2.0mm Pilot Drill	Paralleling Pin	3.0mm Drill	3.8mm Drill	4.5mm Drill	5.5mm Drill	Bone Taps	PUR® Implant Driver	PUR® Hex Drivers
3.5mm body diameter									
4.3mm body diameter									
5.0mm body diameter									
6.0mm body diameter									
PUR®/TRU® Drill Sequence							Bone Taps (3.5, 4.3, 5.0, 6.0mm)	Implant Driver	Hex Drivers
Recommended Speed 1,200-2,000 RPM <small>(Paralleling Pin is for guide only)</small>							Recommended Speed 15-30 RPM		

PUR® DRILL MARKINGS



FINAL DRILLING STEPS

Final Drilling step when placing the 3.5mm PUR® Implant

Enlarge the osteotomy using the 3.0mm drill. If the bone is very dense, create internal threads in the osteotomy. Use the unique PUR® 3.5mm Titanium Bone Tap at 15-30 RPM.

Final Drilling step when placing the 4.3mm PUR® Implant

Enlarge the osteotomy using the 3.8mm drill. If the bone is very dense, create internal threads in the osteotomy. Use the unique PUR® 4.3mm Titanium Bone Tap at 15-30 RPM.

Final Drilling step when placing the 5.0mm PUR® Implant

Enlarge the osteotomy using the 4.5mm drill. If the bone is very dense, create internal threads in the osteotomy. Use the unique PUR® 5.0mm Titanium Bone Tap at 15-30 RPM.

Final Drilling step when placing the 6.0mm PUR® Implant

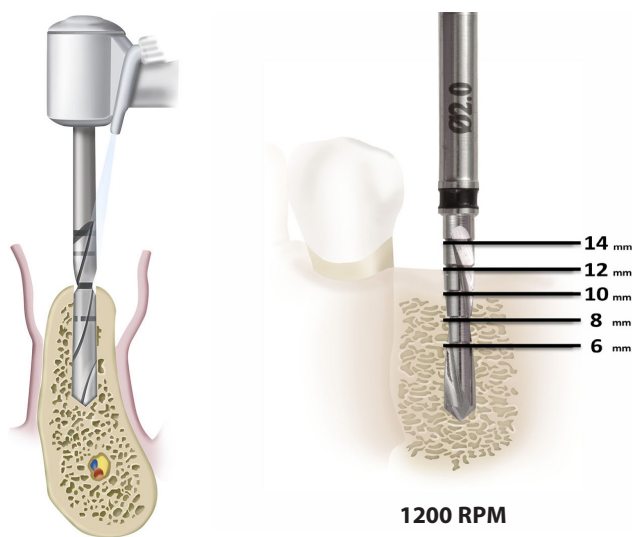
Enlarge the osteotomy using the 5.5mm drill. If the bone is very dense, create internal threads in the osteotomy using the unique PUR® 6.0mm Titanium Bone Tap at 15-30 RPM.

LANCE DRILL



Clear the implant site by using a tissue punch or flap. Penetrate the cortical bone using the Lance Drill to mark the site and to guide the subsequent drills.

TWIST DRILL



Penetrate the bone to the appropriate depth using the 2.0mm drill. Depth markings are on the drill (6, 8, 10, 12 and 14mm). Lance drill and 2.0mm Twist drill: 1000- 1500rpm. All other drills: 10rpm or less. Irrigate to control temperature.

PARALLELING PIN

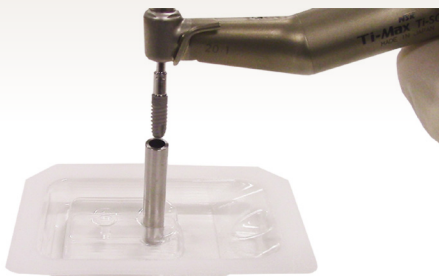


Place a Paralleling Pin into one osteotomy and use this as a guide to help align the second hole. The Paralleling Pin can also be used as a depth gauge.

FINAL DRILLING TO FULL DEPTH

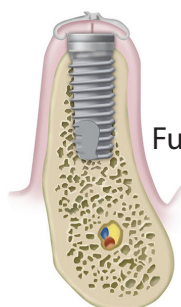


IMPLANT DRIVER



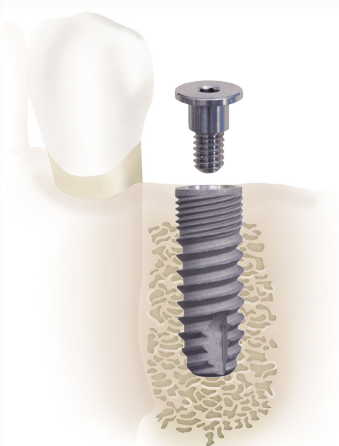
PUR® implants are packaged without an Implant Mount attached. The PUR® Implant Drivers are used to carry the implant from the package to the surgical site and to drive the implant into the bone. Simply press the appropriate driver into the implant until the hex area on the driver engages the hex inside the implant.

The PUR® Implant Driver is used to drive all PUR® implants. Insert at 15-30 RPM, with torque not to exceed 55 Ncm. Once the implant is completely seated, pull to remove the driver from the implant.



Fully seated PUR® Implant

COVER SCREW



The appropriate PUR® Cover Screw may be used if this is to be a two-stage surgery. Tighten the cover screw with a .050" hex driver.

HEALING ABUTMENT



If this is to be a one-stage surgery, the appropriate PUR® Healing Abutment is placed and tightened using a .050" hex driver.

DENSER BONE DRILLING – OPTIONAL PROTOCOL

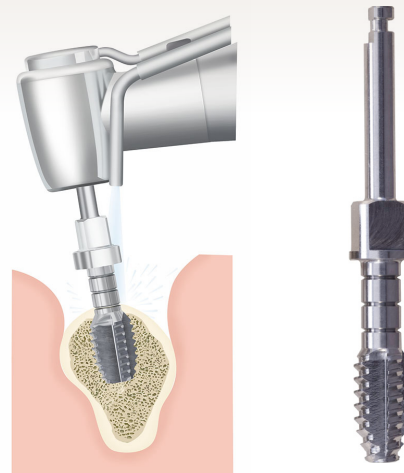
If implant placement was attempted and only one-half or two-thirds of the implant seated within the Osteotomy, use these optional Cortical or Dense Bone drills:

Implant Diameter	Lance Drill 2.0mm Pilot Drill	Paralleling Pin	3.25mm Drill 4.05mm Drill 4.75mm Drill 5.75mm Drill	Bone Taps	2.1mm Drill	3.2mm Drill 3.5mm Drill 4.3mm Drill 5.0mm Drill 6.0mm Drill
3.5mm body diameter						
4.3mm body diameter						
5.0mm body diameter						
6.0mm body diameter						
Optional PUR™ /TRU™ Drill Sequence (Dense Bone)				Bone Taps (3.5, 4.3, 5.0, 6.0mm)	Lindemann Drill (For angle correction following 2mm pilot if needed)	Cortical Drills (Denser bone drilling options)
Recommended Speed 1,200-2,000 RPM <small>(Paralleling Pin is for guide only)</small>				Recommended Speed 15-30 RPM	Denser Bone Drilling Optional Recommendations	

DENSE BONE DRILLS FOR UNIFORMLY DENSE BONE



BONE TAP FOR BONE THREADING IN DENSE BONE



CORTICAL BONE DRILLS FOR DENSE OR SUPERIOR CORTICAL BONE



LINDEMANN DRILL FOR WIDENING OR PATH INSERTION CORRECTION



Single Stage Protocol Considerations

- Torque recommendation for single stage surgery with healing abutment placement: 35 – 55 Ncm of initial stability of implant is recommended.
- Soft tissue matures while the bone interface is healing.
- Higher location of the implant-abutment connection may reduce some of the early crestal bone loss.

Surgical Note Recommendation

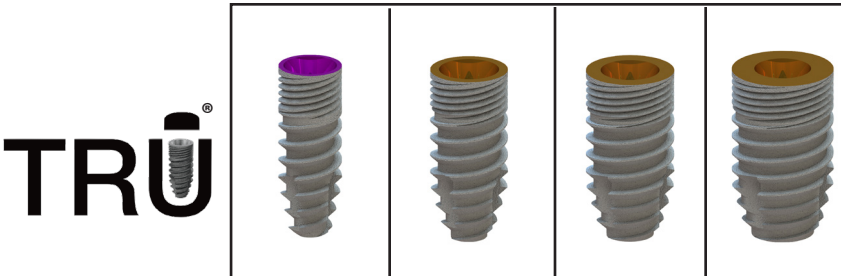
Recommendations for Implant Placement Documenting:

- Implant location, implant type, platform diameter, implant length /size.
- Difficulties encountered during placement, if any.
- All materials used during surgery (documentation of LOT no. / batch no.).
- Primary stability using standardized measurements or descriptive criteria.
- Size and type of abutment placed.
- Any recommendations, instructions or advice given to the patient about the surgical treatment.

The TRU® implant system is designed to be simple to use, while also providing predictable clinical results. The precision manufacturing of the TRU® produces the highest quality implants and prosthetic components, at an excellent value to the clinician.

The implant body design is a self-tapping screwtype, with a double lead thread pattern, and micro threads at the top, making it ideal for achieving immediate stability. The TRU® features the SGE surface treatment for expedited osseointegration. The implant does not require a mount and is delivered to the mouth directly with the Implant Driver. The bone-level, internal connection TRU® Implant is substantially equivalent to the Nobel Biocare Conical Connection*.

- Simple, Predictable, Reliable
- Quality at a Value Price
- Provides Strong Initial Stability
- SGE surface treatment
- Diameters: 3.5, 4.3, 5.0**, 6.0mm**
- Lengths of 8, 10, 12, 14mm
- Mountless Delivery

				
Body diameter	3.5mm	4.3mm	5.0mm	6.0mm
Prosthetic connection	3.5mm (NP)	4.5mm (RP)	4.5mm (RP)	4.5mm (RP)
8mm length	901340***	901344***	901348***	901352***
10mm length	901341***	901345***	901349***	901353***
12mm length	901342***	901346***	901350***	N/A
14mm length	901343***	901347***	N/A	N/A

All implants come with cover screw

*Nobel Biocare® is a registered trademark of Nobel Biocare®.

**5.0mm available 8,10,12mm lengths / 6.0mm available in 8 and 10mm lengths.

*** DENOTES ANODIZED PART AND COVER SCREW

*** DENOTES ANODIZED PART AND COVER SCREW

TRU® / PUR® SURGICAL KIT

905299

Kit includes instruments to place PUR® and TRU® Implants

Kit contents: Lance Drill, 2.0, 3.0, 3.8, 4.5, 5.5mm Drills, 3.5, 4.3, 5.0, 6.0mm Bone Taps, Torque Wrench, Parallel Pin (4), Drill Extender, Thumb Knob, .050" Hex Latch Driver, .050" Hex tool, Long Driver.

TRU® Add on Kit:

905330

TRU® RP Implant Driver-Latch, TRU® RP Implant Driver Wrench-Long
TRU® NP Implant Driver-Latch, TRU® NP Implant Driver Wrench-Long



Lance Pilot Drill

903014

- The Lance Pilot drill is used to penetrate the cortical bone in order to mark the site and to guide the subsequent drills.



TRU® / PUR® 2.0mm Pilot Drill 6, 8, 10, 12, 14mm **905288**



SURGICAL DRILLS

- Useful depth markings are on the drills (6, 8, 10, 12, and 14mm).
- Irrigate to control temperature.
- All drilling should be performed at low speeds (1000 to 1500 RPM) to maintain bone temperature as low as possible.

TRU® / PUR® 3.0mm Pilot Drill 6, 8, 10, 12, 14mm **905289**

TRU® / PUR® 3.8mm Pilot Drill 6, 8, 10, 12, 14mm **905290**

TRU® / PUR® 4.5mm Pilot Drill 6, 8, 10, 12, 14mm **905291**

TRU® / PUR® 5.5mm Pilot Drill 6, 8, 10, 12, 14mm **905292**



PARALLELING PIN

2.0mm/3.45mm

905282

- The Paralleling Pins can be placed into the osteotomy to guide the drilling of subsequent holes.



BONE TAPS

- An instrument for cutting a screw thread inside the osteotomy.

TRU®/PUR® 3.5mm Tap

905293

TRU®/PUR® 4.3mm Tap

905294

TRU®/PUR® 5.0mm Tap

905296

TRU®/PUR® 6.0mm Tap

905297



TRU® IMPLANT DRIVER, WRENCH

Short
Long

Narrow Platform
905320
905261

Regular Platform
905321
905262



TRU® IMPLANT DRIVER - LATCH

Narrow Platform
905285

Regular Platform
905286



DRILL EXTENDER

905280

- Increases length of drill by 18mm.
- Attaches to standard latch type handpiece.



.050" HEX LATCH DRIVER

905023

- Used to install Sterngold's surgical and prosthetic components.
- Excellent for difficult to reach areas.



.050" HEX TOOL LONG

905229

.050" HEX TOOL SHORT

905228



THUMB KNOB

905213

- Used for hand tightening of torque wrench tools.



GRADUATED TORQUE WRENCH

905738

- Features both a torque and ratchet function.
- Torque to 10-70Ncm.



LINDEMANN DRILL

903015

- Placement of vertical groove to facilitate planned implant orientation
- Enlargement of crestal 1/3 of osteotomy
- Angle correction following 2mm twist drill



DENSE BONE DRILLS

- For uniformly dense bone.

3.25 mm Dense Bone Drill	6, 8, 10, 12, 14	905336
4.05 mm Dense Bone Drill	6, 8, 10, 12, 14	905337
4.75 mm Dense Bone Drill	6, 8, 10, 12, 14	905338
5.75 mm Dense Bone Drill	6, 8, 10, 12, 14	905339



CORTICAL BONE DRILLS

- For superior cortical bone.

3.2 mm Cortical Drill	905522
3.5 mm Cortical Drill	905523
4.3 mm Cortical Drill	905524
5.0 mm Cortical Drill	905525
6.0 mm Cortical Drill	905526



STRAIGHT ABUTMENTS (TITANIUM)

Narrow Platform

1.5mm cuff	904003*
3.0mm cuff	904006*

Regular Platform

1.5mm cuff	904005*
3.0mm cuff	904008*



HEX UCLA ABUTMENTS

Narrow Platform

Titanium	904726*
Gold	904018
Plastic	904009

Regular Platform

Titanium	904727*
Gold	904020
Plastic	904011



IMPLANT ANALOGS

Narrow Platform (NP)	904545
Regular Platform (RP)	904544
Stern SNAP® Analog	904962
ERA® Micro Ovd. Processing Jig	811042
ORA Processing Jig	811001



NON-HEXED UCLA ABUTMENT

Narrow Platform

Titanium	904728*
Gold	904026
Plastic	904012

Regular Platform

Titanium	904729*
Gold	904027
Plastic	904014



ANGLED ABUTMENTS*

15° TRU Ti Esthetic (NP)	907134
15° TRU Ti Esthetic (RP)	907135

***INCLUDES PROSTHETIC SCREW**



WAXING SLEEVES

Narrow Platform

Hex	904032
Non-Hexed	904035

Regular Platform

Hex	904033
Non-Hexed	904036



WAXING SCREWS

Narrow Platform

Long, Hex	904658*
Short, Hex	904660

Regular Platform

Long, Hex	904659*
Short, Hex	904661*



IMPRESSION COPINGS

Impression Coping (NP)	904015*
Impression Coping (RP)	904017*
Stern SNAP® Impression Coping	904961
ERA® Micro Overdenture Impr. Coping	811236



HEALING ABUTMENTS

Narrow Platform

3.0mm	901437*
5.0mm	901439*

Regular Platform

3.0mm	901438*
5.0mm	901440*

*** DENOTES ANODIZED PART**

*** DENOTES ANODIZED PART**

MULTI-UNIT ABUTMENTS*



0° 1.5mm H (NP)	907140
0° 2.5mm H (NP)	907141
17° 2.5mm H (NP)	907136
17° 3.5mm H (NP)	907137
30° 3.5mm H (NP)	907138
30° 4.5mm H (NP)	907139
0° 1.5mm H (RP)	907146
0° 2.5mm H (RP)	907147
17° 2.5mm H (RP)	907142
17° 3.5mm H (RP)	907143
30° 3.5mm H (RP)	907144
30° 4.5mm H (RP)	907145

* Angled Multi-Unit Abutments include Angled Abutment screw. Prosthetic Screw sold separately.



MULTI-UNIT ABUTMENT ANALOG

907129



MULTI-UNIT OPEN TRAY
TEMPORARY ABUTMENT Ti 907153

Screw Included. Install with Unigrip™ Driver.



MULTI-UNIT TEMPORARY HEALING CAP

907152

Install with Unigrip™ Driver.



*MULTI-UNIT IMPRESSION
COPING (OPEN TRAY) 907130

*.050" Guide Pin included.



MULTI-UNIT PROSTHETIC SCREW 907151
Install with Unigrip™ Driver.



NP ANGLED MULTI-UNIT ABUTMENT SCREW
907148



RP ANGLED MULTI-UNIT ABUTMENT SCREW
907149



SNAP® ONE-PIECE IMPLANT ABUTMENTS (Torque to 20 Ncm)

Narrow Platform

1mm Cuff	904568
2mm Cuff	904569
3mm Cuff	904570
4mm Cuff	904571

Regular Platform

1mm Cuff	904572
2mm Cuff	904573
3mm Cuff	904574
4mm Cuff	904575

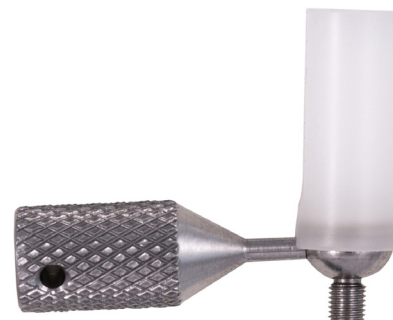
SNAP® RETAINING CAPS-METAL FREE

Assortment	904130
Yellow	904134
Green	904135
Brown	904136

LOC® PEKKTON® INSERTS* (METAL HOUSING)

Basic Set	05003082
Yellow (4)	05001314
Red (4)	05001315
Green (4)	05001316
Blue (4)	05001317
White (4, Processing)	05001328

*Retention inserts come in a variety of retention levels.
Yellow= Extra low, Red=Low, Green=Medium and Blue=Strong



SNAP® ANGLED COMPLETE ATTACHMENT

- When ordering the Stern Snap Angled attachment, you must also choose an Abutment Base for the appropriate Implant System.
The Stern Snap screws into the Abutment Base to provide a connection to an overdenture.

- Torque to 20Ncm

904123



SNAP® ANGLED ABUTMENT BASE* (Torque to 30 Ncm)

Narrow Platform

1.75mm Cuff	904636
3mm Cuff	904637
4mm Cuff	904638
5mm Cuff	904639

Regular Platform

1.75mm Cuff	904632
3mm Cuff	904633
4mm Cuff	904634
5mm Cuff	904635

Choose one and add **904123** for each abutment base ordered and appropriate retaining caps pictured above.



ORA IMPLANT ABUTMENT

Narrow Platform

1.0mm Cuff	904680
2.0mm Cuff	904681
3.0mm Cuff	904682
4.0mm Cuff	904683
5.0mm Cuff	904684

Regular Platform

1.0mm Cuff	904675
2.0mm Cuff	904676
3.0mm Cuff	904677
4.0mm Cuff	904678



ORA RETAINING CAP

904064



ORA RETAINING RING

904002



ERA® IMPLANT ABUTMENTS (MICRO)

Narrow Platform

1mm Cuff	812419
2mm Cuff	812420
3mm Cuff	812421
4mm Cuff	812422
5mm Cuff	812423
6mm Cuff	812424

Regular Platform

0.5mm Cuff	812844
2mm Cuff	812845
3mm Cuff	812846
4mm Cuff	812847
5mm Cuff	812848
6mm Cuff	812849



ERA® MICRO MALE PACKAGE

811008



*SCAN BODIES AND TI BASES

Narrow Platform

TRU® Scan Body	904756
TRU® Ti Base	904758



Regular Platform

TRU® Scan Body	904757
TRU® Ti Base	904759

*.050" Prosthetic Screw Included

EZ PickUp® Attachment Processing Material

Tissue-colored, automixing, self-curing attachment processing material.

- Odorless.
- Low curing temperature.
- Less than 1 percent shrinkage resulting in a more accurate and complete pickup of the attachment.
- When used with the ERA Implant System, it will not irritate freshly sutured tissue like methyl methacrylate will.
- Can be used to pick up any attachment.
- EZ PickUp® will chemically bond to acrylic only if a primer is used. Use SternVantage® Varnish LC as a primer for acrylic.



EZ PickUp®, Syringe, Tips & Varnish

1 syringe @ 15 grams, 15 Tips and 5.0ml Varnish

220237

EZ PickUp®, Syringe & Tips

1 syringe @ 15 grams and 15 Tips

220235

EZ PickUp® Tips (15)

220233



SternVantage® Varnish LC 5ml

220232

SternVantage® Varnish LC is a light cure one-component surface coating material based on acrylates and cures without a smear layer caused by oxygen inhibition.

- Solvent and stain resistant.
- Ultra-dry finish with a smooth surface.
- Produces a high gloss and hard surface with no polishing necessary.





Quickline® Soft-Reline material

QuickLine®, the long-term soft relining material, can be directly applied from its automix cartridge. The self-curing silicones allow for easy working, either using a direct or indirect lining procedure. Adhesion to the usual PMMA based materials for dentures is achieved by a specially developed highly active primer.

- Biocompatible, no methyl methacrylate.
- Tasteless and odorless.
- Requires no extra work in the laboratory.
- Automixing cartridge delivery system for fast, easy and mess-free application.
- Permanently soft for increased patient comfort.
- Self-curing.
- Color stable.
- Can be used on any standard resin for prosthetics.
- Dispenses with 1:1/2:1 Dispensing Gun.

Quickline® - Introductory Kit 220180

1 cartridge (50 ml) QuickLine, 12 mixing tips, 2 bottles (10ml) (base and catalyst) Varnish, 1 bottle Primer (5 ml), 25 brushes, 1 mixing palette

Quickline® refill 220181

1 cartridge QuickLine™ @ 50 ml, 12 mixing tips

Quickline® primer 220183

1 bottle Primer, 5 ml

- Easy to use.
- Quick set up solvent evaporates in 1 minute.
- Provides adhesion between PMMA based material used for dentures and self-curing silicone.

Quickline® Varnish 220182

2 bottles (base and catalyst), 10 ml each, 25 brushes, 1 mixing palette

- Easy to use.
- Provides a glossy and lasting surface.
- Reduces plaque retention.
- Reduces stain and odor build-up.
- Reapplicable for extended use.
- Quick drying time (5 minutes).

Quickline® mixing tips (50) 220162



TRU™ DRILL SEQUENCE

Implant Diameter	Lance Drill 2.0mm Pilot Drill	Paralleling Pin	3.0mm Drill	3.8mm Drill	4.5mm Drill	5.5mm Drill	Bone Taps	TRU® Implant Drivers	TRU® Hex Drivers
3.5mm body diameter									
4.3mm body diameter									
5.0mm body diameter									
6.0mm body diameter									
PUR®/TRU® Drill Sequence							Bone Taps (3.5, 4.3, 5.0, 6.0mm)	Implant Drivers	Hex Drivers
Recommended Speed 1,200-2,000 RPM <small>(Paralleling Pin is for guide only)</small>							Recommended Speed 15-30 RPM		

TRU® DRILL MARKINGS



FINAL DRILLING STEPS

Final Drilling step when placing the 3.5mm TRU® Implant

Enlarge the osteotomy using the 3.0mm drill. If the bone is very dense, create internal threads in the osteotomy. Use the unique TRU® 3.5mm Titanium Bone Tap at 15-30 RPM.

Final Drilling step when placing the 4.3mm TRU® Implant

Enlarge the osteotomy using the 3.8mm drill. If the bone is very dense, create internal threads in the osteotomy. Use the unique TRU® 4.3mm Titanium Bone Tap at 15-30 RPM.

Final Drilling step when placing the 5.0mm TRU® Implant

Enlarge the osteotomy using the 4.5mm drill. If the bone is very dense, create internal threads in the osteotomy. Use the unique TRU® 5.0mm Titanium Bone Tap at 15-30 RPM.

Final Drilling step when placing the 6.0mm TRU® Implant

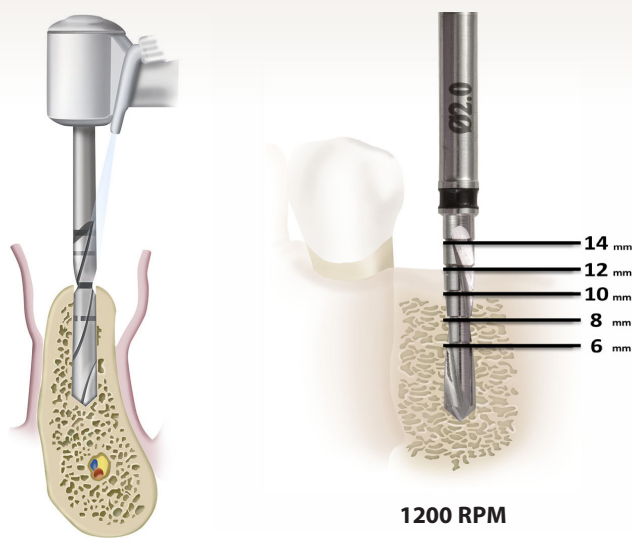
Enlarge the osteotomy using the 5.5mm drill. If the bone is very dense, create internal threads in the osteotomy using the unique TRU® 6.0mm Titanium Bone Tap at 15-30 RPM.

LANCE DRILL



Clear the implant site by using a tissue punch or flap. Penetrate the cortical bone using the Lance Drill to mark the site and to guide the subsequent drills.

TWIST DRILL



Penetrate the bone to the appropriate depth using the 2.0mm drill. Depth markings are on the drill (6, 8, 10, 12 and 14mm). Lance drill and 2.0mm Twist drill: 1000- 1500rpm. All other drills: 10rpm or less. Irrigate to control temperature.

PARALLELING PIN

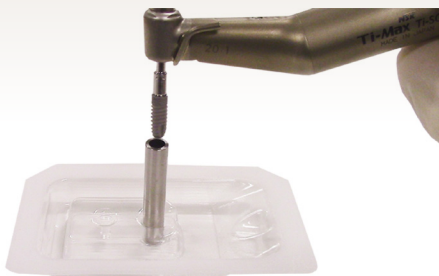


Place a Paralleling Pin into one osteotomy and use this as a guide to help align the second hole. The Paralleling Pin can also be used as a depth gauge.

FINAL DRILLING TO FULL DEPTH

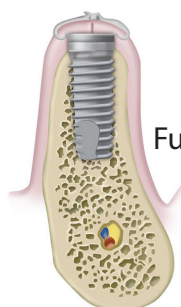


IMPLANT DRIVER



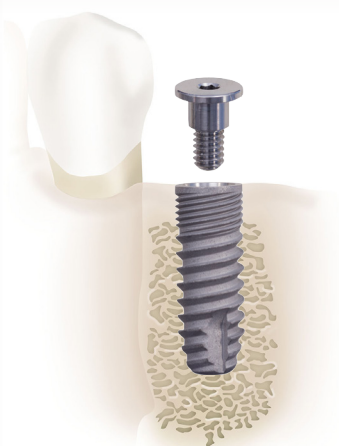
TRU® implants are packaged without an Implant Mount attached. The TRU® Implant Drivers are used to carry the implant from the package to the surgical site and to drive the implant into the bone. Simply press the appropriate driver into the implant until the hex area on the driver engages the hex inside the implant.

The TRU® Implant Driver is used to drive all TRU® implants. Insert at 15-30 RPM, with torque not to exceed 55 Ncm. Once the implant is completely seated, pull to remove the driver from the implant.



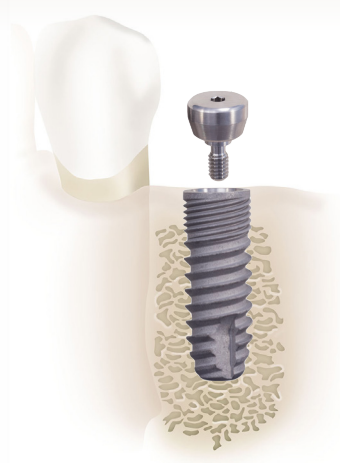
Fully seated TRU® Implant

COVER SCREW



The appropriate TRU® Cover Screw may be used if this is to be a two-stage surgery. Tighten the cover screw with a .050" hex driver

HEALING ABUTMENT



If this is to be a one-stage surgery, the appropriate TRU® Healing Abutment is placed and tightened using a .050" hex driver.

DENSER BONE DRILLING – OPTIONAL PROTOCOL

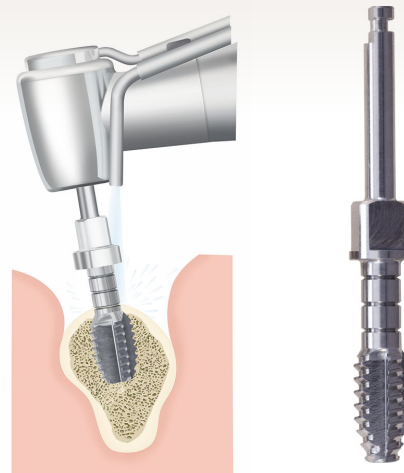
If implant placement was attempted and only one-half or two-thirds of the implant seated within the Osteotomy, use these optional Cortical or Dense Bone drills:

Implant Diameter	Lance Drill 2.0mm Pilot Drill	Paralleling Pin	3.25mm Drill 4.05mm Drill 4.75mm Drill 5.75mm Drill	Bone Taps	2.1mm Drill	3.2mm Drill 3.5mm Drill 4.3mm Drill 5.0mm Drill 6.0mm Drill
3.5mm body diameter						
4.3mm body diameter						
5.0mm body diameter						
6.0mm body diameter						
Optional PUR™ /TRU™ Drill Sequence (Dense Bone)				Bone Taps (3.5, 4.3, 5.0, 6.0mm)	Lindemann Drill (For angle correction following 2mm pilot if needed)	Cortical Drills (Denser bone drilling options)
Recommended Speed 1,200-2,000 RPM <small>(Paralleling Pin is for guide only)</small>				Recommended Speed 15-30 RPM	Denser Bone Drilling Optional Recommendations	

DENSE BONE DRILLS FOR UNIFORMLY DENSE BONE



BONE TAP FOR BONE THREADING IN DENSE BONE



CORTICAL BONE DRILLS FOR DENSE OR SUPERIOR CORTICAL BONE



LINDEMANN DRILL FOR WIDENING OR PATH INSERTION CORRECTION



Single Stage Protocol Considerations

- Torque recommendation for single stage surgery with healing abutment placement: 35 – 55 Ncm of initial stability of implant is recommended.
- Soft tissue matures while the bone interface is healing.
- Higher location of the implant-abutment connection may reduce some of the early crestal bone loss.

Surgical Note Recommendation

Recommendations for Implant Placement Documenting:

- Implant location, implant type, platform diameter, implant length /size.
- Difficulties encountered during placement, if any.
- All materials used during surgery (documentation of LOT no. / batch no.).
- Primary stability using standardized measurements or descriptive criteria.
- Size and type of abutment placed.
- Any recommendations, instructions or advice given to the patient about the surgical treatment.

Internal Connection Implant Fixtures have an internal octagon connection with a 1.8mm machined collar. It's single stage surgical procedure allows for reduced chair time and patient trauma.

- The Stern IC is an implant compatible with the Straumann® ITI Dental Implant System.
- Mount body included.
- 3.3mm and 4.1mm fixture diameters (4.8mm prosthetic platform).
- 1.8mm machined collar for transgingival placement.
- 1.8mm collar can also be used for 2 stage surgery.
- Internal taper minimizes bacterial percolation and screw loosening.
- Acid etched surface treatment.
- Internal octagon.
- Cover screw packaged separately to accommodate various restorative options.
- Available lengths: 8mm, 10mm, 12mm, and 14mm.

		
Body diameter	3.3mm	4.1mm
Prosthetic connection	4.8mm	4.8mm
8mm length	902725	902721
10mm length	902726	902722
12mm length	902727	902723
14mm length	902728	902724

*ITI® Dental Implant System and Straumann® are federally registered trademarks of Institut Straumann, Switzerland.



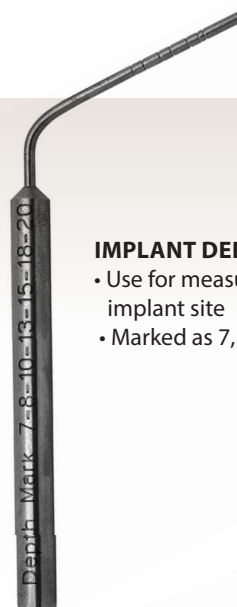
Sterngold's Surgical Instruments are designed to make implant insertion convenient and efficient

STERN IC STARTER DRILL
STERN IC 2.2MM DRILL
STERN IC 2.8MM DRILL
STERN IC 3.5MM DRILL
STERN IC 4.3MM DRILL

905703
905704
905705
905706
905707

LINDEMANN DRILL

903015



IMPLANT DEPTH PROBE 905073

- Use for measuring depth of surgical implant site
- Marked as 7, 8, 10, 13, 15, 18 and 20mm



STERN IC MOUNT DRIVER

905708



GRADUATED TORQUE WRENCH

- Features both a torque and ratchet function.
- Torque to 10-70Ncm

905738



STERN IC HOLDING KEY
905720



SNAP® ONE-PIECE IMPLANT ABUTMENTS(Torque to 20Ncm)

Cuff Height	Product Number
1mm	904577
0mm	904576
2.0mm	904578
3.0mm	904579

SNAP® RETAINING CAPS-METAL FREE

Assortment	904130
Yellow	904134
Green	904135
Brown	904136

LOC® PEKKTON® INSERTS* (METAL HOUSING)

Basic Set	05003082
Yellow (4)	05001314
Red (4)	05001315
Green(4)	05001316
Blue (4)	05001317
White (4,Processing)	05001328

*Retention inserts come in a variety of retention levels.
Yellow= Extra low, Red=Low, Green=Medium and Blue=Strong



SNAP® ANGLED COMPLETE ATTACHMENT

- When ordering the Stern Snap Angled attachment, you must also choose an Abutment Base for the appropriate Implant System.
The Stern Snap screws into the Abutment Base to provide a connection to an overdenture.
- Torque to 20Ncm

904123



SNAP® ABUTMENT BASE (Torque to 30Ncm)

Cuff Height	Product Number
.75mm	904929
1.75mm	904930
3.0mm	904931
4.0mm	904932
5.0mm	904933

*Choose one and add 904123 for each abutment base ordered with appropriate retaining caps pictured above.



ORA IMPLANT ABUTMENT

- For use with dental implants to support and/or retain removable dental prostheses in the treatment of partially or totally edentulous patients to restore chewing function.

Cuff Height	Product Number
0.4mm	904264
1.0mm	904265
2.0mm	904266
3.0mm	904267
4.0mm	904268



ORA RETAINING CAP 904064



ORA RETAINING RING 904002



ERA® IMPLANT ABUTMENTS (MICRO)

- ERA® Abutments provide a resilient attachment with universal hinge movement
- Titanium nitride hardened to decrease attachment wear.
- Torque to 20Ncm.

Cuff Height	Product Number
1.0mm	812858
2.0mm	812859
3.0mm	812860
4.0mm	812798
5.0mm	812861



ERA® MICRO MALE PKG. 811008



STERN IC SOLID ABUTMENTS

Cuff Height	Product Number
4.0mm	904704
5.5mm	904705
7.0mm	904706



STERN IC IMPRESSION COPINGS

- The Impression Copings are use for the solid abutments

Cuff Height	Product Number
4.0mm	904494
5.5mm	904495
7.0mm	904496

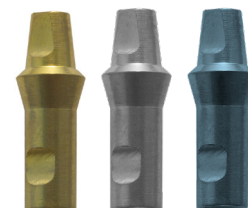


STERN IC SOLID ABUTMENT DRIVER 905709

- Used to Install Stern IC Solid Abutments



STERN IC IMPLANT ANALOG 904535 (Stainless Steel)



STERN IC RN ANALOGS

- The IC Analog simulates an implant with a solid abutment and is color coded to match the solid abutment of the same size.

Cuff Height	Product Number
4.0mm	904710
5.5mm	904711
7.0mm	904712



STERN IC HEALING CAP (.048" Hex) Cuff Height Product Number

2.0mm	901096
3.0mm	901097

EZ PickUp® Attachment Processing Material

Tissue-colored, automixing, self-curing attachment processing material.

- Odorless.
- Low curing temperature.
- Less than 1 percent shrinkage resulting in a more accurate and complete pickup of the attachment.
- When used with the ERA Implant System, it will not irritate freshly sutured tissue like methyl methacrylate will.
- Can be used to pick up any attachment.
- EZ PickUp® will chemically bond to acrylic only if a primer is used. Use SternVantage® Varnish LC as a primer for acrylic.



EZ PickUp®, Syringe, Tips & Varnish

1 syringe @ 15 grams, 15 Tips and 5.0ml Varnish

220237

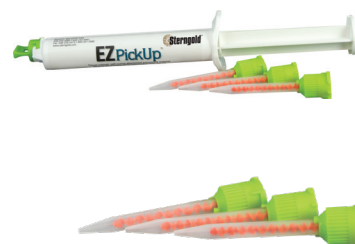
EZ PickUp®, Syringe & Tips

1 syringe @ 15 grams and 15 Tips

220235

EZ PickUp® Tips (15)

220233



SternVantage® Varnish LC 5ml

220232

SternVantage® Varnish LC is a light cure one-component surface coating material based on acrylates and cures without a smear layer caused by oxygen inhibition.

- Solvent and stain resistant.
- Ultra-dry finish with a smooth surface.
- Produces a high gloss and hard surface with no polishing necessary.





Quickline® Soft-Reline material

QuickLine®, the long-term soft relining material, can be directly applied from its automix cartridge. The self-curing silicones allow for easy working, either using a direct or indirect lining procedure. Adhesion to the usual PMMA based materials for dentures is achieved by a specially developed highly active primer.

- Biocompatible, no methyl methacrylate.
- Tasteless and odorless.
- Requires no extra work in the laboratory.
- Automixing cartridge delivery system for fast, easy and mess-free application.
- Permanently soft for increased patient comfort.
- Self-curing.
- Color stable.
- Can be used on any standard resin for prosthetics.
- Dispenses with 1:1/2:1 Dispensing Gun.

Quickline® - Introductory Kit 220180

1 cartridge (50 ml) QuickLine, 12 mixing tips, 2 bottles (10ml) (base and catalyst) Varnish, 1 bottle Primer (5 ml), 25 brushes, 1 mixing palette

Quickline® refill 220181

1 cartridge QuickLine™ @ 50 ml, 12 mixing tips

Quickline® primer 220183

1 bottle Primer, 5 ml

- Easy to use.
- Quick set up solvent evaporates in 1 minute.
- Provides adhesion between PMMA based material used for dentures and self-curing silicone.

Quickline® Varnish 220182

2 bottles (base and catalyst), 10 ml each, 25 brushes, 1 mixing palette

- Easy to use.
- Provides a glossy and lasting surface.
- Reduces plaque retention.
- Reduces stain and odor build-up.
- Reapplicable for extended use.
- Quick drying time (5 minutes).

Quickline® mixing tips (50) 220162



The Acid Etched Implants are self-tapping, double thread, screw implants, made from pure grade 4 titanium. The acid etched surface promotes faster healing, making them great for immediate load applications.

- Acid etched right up to the base of the collar.
- Double thread for faster insertion.
- No fixture mount needed - special SternTwist driver delivers and drives the implant using internal grooves.
- Regular (4.1mm) and Narrow (3.5mm) platforms with a standard external hex.
- Compatible with Sterngold's extensive line of regular prosthetics, which are also compatible and interchangeable with the Branemark System.*
- For non-rotational single and multiple tooth restorations in both the maxilla and mandible.

				
Body diameter	3.3mm**	3.75mm***	4.0mm***	5.0mm***
Prosthetic connection	3.5mm (NP)	4.1mm (RP)	4.1mm (RP)	4.1mm (RP)
8.5mm length	901654	901810	901816	901820
10mm length	901655	901811	901817	901821
11.5mm length	901656	901812	901808	901824
13mm length	901657	901813	901818	N/A
15mm length	901658	901814	901819	N/A
18mm length	N/A	901815	N/A	N/A

* Branemark System® is a registered trademark of the Nobel Biocare Group.

** 3.3mm implant is direct delivery with implant mount and cover screw.

*** 3.75mm, 4.0mm, and 5.0mm are packaged with cover screw.



STERN TWIST

- Internal grip/driver for regular platform acid etch implants.
- Implant mounts not needed.
- One instrument for placement of both implant and cover screw.
- Install implants with SternTwist or implant mount driver attachment.
- Install cover screw with SternTwist or with Large External Hex Driver (.048").

Regular Platform

21mm
25mm

Product Number

901822
901823



LINDEMANN DRILL

903015



STERN EX BONE TAPS

Regular Platform

3.75mm Bone Tap
4.0mm Bone Tap
5.0mm Bone Tap

Product Number

905107
905108
905109

Narrow Platform

3.3mm Bone Tap

Product Number

905089



PARALLELING PINS

- Double ended design to fit 2.0mm and 3.0mm sites.
- Aids in proper alignment of the implants during surgery.
- Verifies depth of countersink.

Item

Short
Long

Length (each end)

10.0mm
15.0mm

Product Number

905088
905085



IMPLANT DEPTH PROBE

905073

- Use for measuring depth of surgical implant site
- Marked as 7, 8, 10, 13, 15, 18 and 20mm



STERN EX IMPLANT MOUNT DRIVER ATTACHMENT

Product Number
905010

- Designed to drive implant mounts and bone taps (except latch drive).
- Used to install ImplaMed® surgical and prosthetic components.
- Excellent for difficult to reach areas.
- Compatible with Branemark System® Components.
- Heat-Treated Stainless Steel.
- Fully Autoclavable.
- Operating Range 0-10 RPM.



OPEN END WRENCH **905103**

Holds implant mount in place while attaching to screw-type implants.



GRADUATED TORQUE WRENCH **905738**

- Features both a torque and ratchet function.
- Torque to 10-70Ncm.



STERN EX HEALING ABUTMENTS (.035 HEX") (RP)

Cuff Height

2.0mm
3.0mm
4.0mm
5.0mm
8.0mm

Product Number

901413
901416
901404
901419
901410



SNAP® ONE-PIECE IMPLANT ABUTMENTS (TORQUE TO 20 NCM)

Cuff Height

2.0mm
3.0mm

Product Number

904613
904614

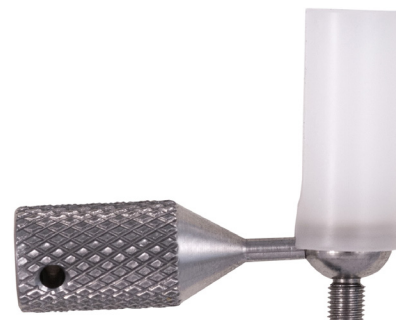
SNAP® RETAINING CAPS-METAL FREE

Assortment	904130
Yellow	904134
Green	904135
Brown	904136

LOC® PEKKTON® INSERTS* (METAL HOUSING)

Basic Set	05003082
Yellow (4)	05001314
Red (4)	05001315
Green(4)	05001316
Blue (4)	05001317
White (4,Processing)	05001328

*Retention inserts come in a variety of retention levels.
Yellow= Extra low, Red=Low, Green=Medium and Blue=Strong



SNAP® ANGLED COMPLETE ATTACHMENT

- When ordering the Stern Snap Angled attachment, you must also choose an Abutment Base for the appropriate Implant System. The Stern Snap screws into the Abutment Base to provide a connection to an overdenture.

- Torque to 20 Ncm.

904123



SNAP® ABUTMENT BASE (TORQUE TO 30NCM)

Cuff Height

4.5mm
5.5mm

Product Number

904922
904923

*Choose one and add **904123** for each abutment base ordered with appropriate retaining caps pictured above.



ERA® IMPLANT ABUTMENTS (MICRO)

- ERA® abutments provide a resilient attachment with universal hinge movement.
- Titanium nitride hardened to decrease attachment wear.
- Torque to 20 Ncm.

Cuff Height

1.0mm
2.0mm
3.0mm
4.0mm
5.0mm
6.0mm

Product Number

812850
812851
812852
812853
812854
812811



ORA IMPLANT ABUTMENT

- For use with dental implants to support and/or retain removable dental prostheses in the treatment of partially or totally edentulous patients to restore chewing function.

Cuff Height

1.25mm
2.0mm
3.0mm
4.0mm
5.0mm

Product Number

904335
904336
904337
904338
904339



ERA IMPLANT ABUTMENT, MICRO MALE PACKAGE, COMPLETE

811008



ORA RETAINING CAP

904064



ORA RETAINING RING

904002



NATURAL PROFILE HEALING ABUTMENT

- Install with wide slotted or large external hex drivers (.048")

Margin Diameter	Platform	Cuff Height	Product Number
4.0mm	Narrow	1.0mm	904505
		2.0mm	904506
		3.0mm	904507
		4.0mm	904508
5.0mm	Regular	1.0mm	904252
		2.0mm	904253
		3.0mm	904254
		4.0mm	904255
6.0mm	Regular	1.0mm	904256
		2.0mm	904257
		3.0mm	904258
		4.0mm	904259



NATURAL PROFILE ABUTMENT

- Includes the titanium Prosthetic Screw
- Identically contoured to the Healing Abutment
- Install with large external hex drivers (.048")

Margin Diameter	Platform	Cuff Height	Product Number
4.0mm	Narrow	1.0mm	904500
		2.0mm	904501
		3.0mm	904502
		4.0mm	904503
5.0mm	Regular	1.0mm	904240
		2.0mm	904241
		3.0mm	904242
		4.0mm	904243
6.0mm	Regular	1.0mm	904244
		2.0mm	904245
		3.0mm	904246
		4.0mm	904247



NATURAL PROFILE ABUTMENT RESTORATIVE COMPONENTS

Natural Profile Impression Screw • Install with Friction Driver	Platform	Product Number
	Narrow Regular	904527 904155
Prosthetic Screw, Titanium • Install with large external hex drivers (.048")	Platform	Product Number
	Narrow Regular	904521 904170
Prosthetic Screw, Noble Alloy • Install with (CERA) square driver, (.052")	Regular	904177
Implant Analog, Stainless Steel	Platform	Product Number
	Narrow Regular	904530 904233

STERN EX UCLA-TYPE ABUTMENTS



Gold UCLA-Type Abutments

- 64% gold, 22% palladium.
- Melting range 1320°C - 1370°C (2400°F - 2500°F).
- Assured precision fit to implant.
- Includes Titanium Prosthetic Screw and Waxing Screw.
- Install with large external hex drivers (.048").

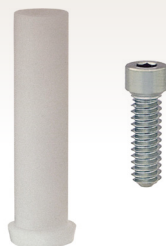
Hexed	Platform	Product Number
	Narrow	904514
	Regular	904149
Non-Hexed	Platform	Product Number
	Narrow	904515
	Regular	904151



UCLA Waxing Sleeve

- Precious metal machined base for precise fit to implants.
- High melting temperature alloy for use with a wide variety of dental alloys.
- Melting range: 1320°C - 1370°C (2400°F - 2500°F).
- Plastic formulated to assure clean burnout.
- Includes Titanium Prosthetic Screw.
- Install with large external hex drivers (.048").

Hexed	Platform	Product Number
	Narrow	904516
	Regular	904181
Non-Hexed	Platform	Product Number
	Narrow	904520
	Regular	904185



Plastic UCLA-Type Abutments

- Economical.
- Includes Titanium Prosthetic Screw.
- Plastic formulated to assure clean burn-out.
- Install with large external hex drivers (.048").

Hexed	Platform	Product Number
	Narrow	904511
	Regular	904139
Non-Hexed	Platform	Product Number
	Narrow	904512
	Regular	904145



PIN VISE
905215



UCLA Facing Tool

Platform	Product Number
Narrow	905149
Regular	905153



UCLA Reamer

Platform	Product Number
Narrow	905155
Regular	905154



Titanium UCLA-Type Abutments

- Includes Titanium Prosthetic Screw.
- Excellent for temporization.
- Install with large external hex drivers (.048").

Hexed	Platform	Product Number
	Narrow	904518
	Regular	904160
Non-Hexed	Platform	Product Number
	Narrow	904519
	Regular	904166

STERN EX RESTORATIVE COMPONENTS



Implant Impression Coping, Closed Tray, Engaging

- Install with friction driver

Platform	Product Number
Regular	904231
Wide	904428
Narrow	904528



Implant Impression Coping, Open Tray, Engaging

- Install with large external hex drivers (.048")

Platform	Product Number
Regular	904124
Narrow	904525



Implant Analog, SS

Platform	Product Number
Regular	904233
Narrow	904530



Prosthetic Screw, Ti

- Install with large external hex drivers (.048")

Platform	Product Number
Regular	904170
Narrow	904521



Prosthetic Screw-Noble Alloy, Ti

- Installs with Square Tip Driver (CERA, 0.52")

Platform	Product Number
Regular	904177



Waxing Screw, Ti

Platform	Product Number
Regular	904157
Narrow	904526



Stern EX 15° & 25° Angled Abutments

- Twelve rotational positions
- Engages external implant hex
- Suitable for single or multi-implant restorations
- Hex Fixation screw included with abutments
- Install with large external hex drivers (.048")

Cuff Height	15°	25°
2 mm	904319	904317
4 mm	904318	904316



Angled Abutment Screw Hexed

- Install with large external hex drivers (.048")

904174



EXTERNAL HEX TOOL, .048", LONG
905227



EXTERNAL HEX TOOL, .048", SHORT
905226



.052" CERAONE ABUTMENT
SQUARE DRIVER
905232

EZ PickUp® Attachment Processing Material

Tissue-colored, automixing, self-curing attachment processing material.

- Odorless.
- Low curing temperature.
- Less than 1 percent shrinkage resulting in a more accurate and complete pickup of the attachment.
- When used with the ERA Implant System, it will not irritate freshly sutured tissue like methyl methacrylate will.
- Can be used to pick up any attachment.
- EZ PickUp® will chemically bond to acrylic only if a primer is used. Use SternVantage® Varnish LC as a primer for acrylic.



EZ PickUp®, Syringe, Tips & Varnish

1 syringe @ 15 grams, 15 Tips and 5.0ml Varnish

220237

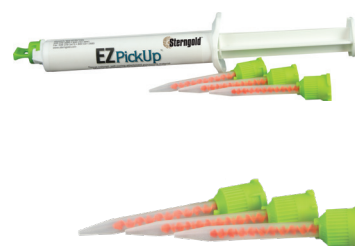
EZ PickUp®, Syringe & Tips

1 syringe @ 15 grams and 15 Tips

220235

EZ PickUp® Tips (15)

220233



SternVantage® Varnish LC 5ml

220232

SternVantage® Varnish LC is a light cure one-component surface coating material based on acrylates and cures without a smear layer caused by oxygen inhibition.

- Solvent and stain resistant.
- Ultra-dry finish with a smooth surface.
- Produces a high gloss and hard surface with no polishing necessary.





Quickline® Soft-Reline material

QuickLine®, the long-term soft relining material, can be directly applied from its automix cartridge. The self-curing silicones allow for easy working, either using a direct or indirect lining procedure. Adhesion to the usual PMMA based materials for dentures is achieved by a specially developed highly active primer.

- Biocompatible, no methyl methacrylate.
- Tasteless and odorless.
- Requires no extra work in the laboratory.
- Automixing cartridge delivery system for fast, easy and mess-free application.
- Permanently soft for increased patient comfort.
- Self-curing.
- Color stable.
- Can be used on any standard resin for prosthetics.
- Dispenses with 1:1/2:1 Dispensing Gun.

Quickline® - Introductory Kit 220180

1 cartridge (50 ml) QuickLine, 12 mixing tips, 2 bottles (10ml) (base and catalyst) Varnish, 1 bottle Primer (5 ml), 25 brushes, 1 mixing palette

Quickline® refill 220181

1 cartridge QuickLine™ @ 50 ml, 12 mixing tips

Quickline® primer 220183

1 bottle Primer, 5 ml

- Easy to use.
- Quick set up solvent evaporates in 1 minute.
- Provides adhesion between PMMA based material used for dentures and self-curing silicone.

Quickline® Varnish 220182

2 bottles (base and catalyst), 10 ml each, 25 brushes, 1 mixing palette

- Easy to use.
- Provides a glossy and lasting surface.
- Reduces plaque retention.
- Reduces stain and odor build-up.
- Reapplicable for extended use.
- Quick drying time (5 minutes).

Quickline® mixing tips (50) 220162



The MOR® Mini Dental Implant is equivalent to the 3M™/IMTEC® MDI*. The 3M™/IMTEC® MDI's drills and instrumentation may be used**.

- Three diameters available 2.1, 2.4 and 3.0mm.
- Lengths of 10, 13, 15 and 18mm.
- SGE surface treatment.
- Can be used for denture connection or crown and bridge fixation.
- Handpiece driver for simple placement.
- The MOR®-A features an abutment head design for crown and bridge indications.

				
Body diameter	2.1mm	2.4mm	3.0mm **	MOR®-A (3.0mm)**
10mm length	901480	901483	901490	901494
13mm length	901481	901484	901491	901495
15mm length	901482	901485	901492	901496
18mm length	901488	901489	901493	901497

* 3M™/ IMTEC® MDI is a registered trademark of the 3M™ Corporation

** Must use Sterngold's MOR® Insertion tool on 3.0mm diameter implants.



MOR® SURGICAL KIT

905257

Kit includes instruments to place MOR® Mini Implants.

- More compact than other surgical kits in the dental industry.
- Empty cavities for other instrumentation.
- Removable Lid.
- Simple to dismantle and assemble during sterilization process.
- Graduated Torque wrench included.

Kit Contents: MOR® Implant Socket, MOR® Wing Driver, MOR® Insertion Tool, MOR® Implant Driver, Latch, Graduated Torque Wrench

MOR® DRILL (SINGLE USE ONLY)

905268

- The MOR® Drill is used to gently penetrate the tissue at each surgical site and to penetrate the cortical plate.



2.0mm LATCH DRILL

905288

- Used for 3.0mm diameter MOR® Implants



2.7mm LATCH DRILL

905219

- Used for dense bone.



GRADUATED TORQUE WRENCH

905738

- The final turn or two of the implant placement may be done by hand, using a torque wrench at a maximum value of 55 Ncm.



MOR® INSERTION TOOL

905266

- The MOR® Insertion Tool serves as a carrier to deliver the implant from the package to the implant site and to begin hand driving the implant into the bone.



MOR® WING DRIVER

905269

- Used when torque resistance is encountered with the Insertion Tool.



MOR® IMPLANT DRIVER - LATCH

905267

- If the insertion cannot be completed using the MOR® Insertion Tool or MOR® Wing Driver, the MOR® Latch Driver is placed into a surgical handpiece and engaged onto the square of the implant head.



MOR® ALIGNMENT GUIDE

905008

- Used for evenly aligning MOR® Implants



MOR® IMPLANT SOCKET

905259

- Use with Graduated Torque Wrench



MOR® RECOVERY TOOL

905006

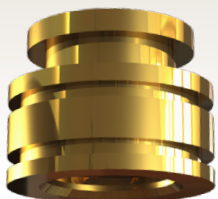
- Tool used for removing failed MOR® Implants



MOR® RC-1

- Retaining cap (includes black o-ring).

904788



MOR® RC-2

- Retaining cap allows for increased retention and less pivoting (includes black o-ring).

904789



MOR® IMPRESSION COPING

- Replicates the profile and location of the abutment interface of a dental implant in the impression to accurately position the implant analog in the model.

904787



MOR® IMPLANT ANALOG

- Used during fabrication of the laboratory prosthetics to duplicate the shape and position of the implant platform.
- Made of Stainless Steel.

904786



MOR® O-RING (10)

909014



MOR® TEMPORIZATION CAP 904754

- A combination of a healing and temporization abutment to allow for ideal gingival recovery.



MOR®-A TEMPORIZATION CAP 904899

- Can be used to make a temporary crown on the MOR®-A Implant. It can also be used as a base with which to create the final crown.
- MOR®-A comes packaged with Temporization Cap.



MOR® SCAN BODY 904753



MOR® IMPLANT DEMONSTRATION MODEL 822000

EZ PickUp® Attachment Processing Material

Tissue-colored, automixing, self-curing attachment processing material.

- Odorless.
- Low curing temperature.
- Less than 1 percent shrinkage resulting in a more accurate and complete pickup of the attachment.
- When used with the ERA Implant System, it will not irritate freshly sutured tissue like methyl methacrylate will.
- Can be used to pick up any attachment.
- EZ PickUp® will chemically bond to acrylic only if a primer is used. Use SternVantage® Varnish LC as a primer for acrylic.



EZ PickUp®, Syringe, Tips & Varnish

1 syringe @ 15 grams, 15 Tips and 5.0ml Varnish

220237

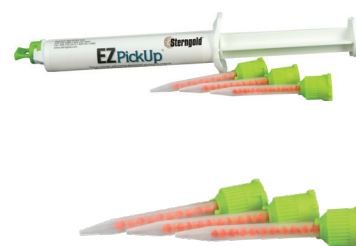
EZ PickUp®, Syringe & Tips

1 syringe @ 15 grams and 15 Tips

220235

EZ PickUp® Tips (15)

220233



SternVantage® Varnish LC 5ml

220232

SternVantage® Varnish LC is a light cure one-component surface coating material based on acrylates and cures without a smear layer caused by oxygen inhibition.

- Solvent and stain resistant.
- Ultra-dry finish with a smooth surface.
- Produces a high gloss and hard surface with no polishing necessary.





Quickline® Soft-Reline material

QuickLine®, the long-term soft relining material, can be directly applied from its automix cartridge. The self-curing silicones allow for easy working, either using a direct or indirect lining procedure. Adhesion to the usual PMMA based materials for dentures is achieved by a specially developed highly active primer.

- Biocompatible, no methyl methacrylate.
- Tasteless and odorless.
- Requires no extra work in the laboratory.
- Automixing cartridge delivery system for fast, easy and mess-free application.
- Permanently soft for increased patient comfort.
- Self-curing.
- Color stable.
- Can be used on any standard resin for prosthetics.
- Dispenses with 1:1/2:1 Dispensing Gun.

Quickline® - Introductory Kit 220180

1 cartridge (50 ml) QuickLine, 12 mixing tips, 2 bottles (10ml) (base and catalyst) Varnish, 1 bottle Primer (5 ml), 25 brushes, 1 mixing palette

Quickline® refill 220181

1 cartridge QuickLine™ @ 50 ml, 12 mixing tips

Quickline® primer 220183

1 bottle Primer, 5 ml

- Easy to use.
- Quick set up solvent evaporates in 1 minute.
- Provides adhesion between PMMA based material used for dentures and self-curing silicone.

Quickline® Varnish 220182

2 bottles (base and catalyst), 10 ml each, 25 brushes, 1 mixing palette

- Easy to use.
- Provides a glossy and lasting surface.
- Reduces plaque retention.
- Reduces stain and odor build-up.
- Reapplicable for extended use.
- Quick drying time (5 minutes).

Quickline® mixing tips (50) 220162



The revolutionary ERA Implant® System for provisional and permanent applications. They combine the extremely popular ERA® Overdenture Attachment with a narrow diameter (2.2 mm or 3.25 mm), self-tapping implant used to immediately stabilize a complete denture and to protect an osseous graft site on a temporary or permanent basis.

- 3.25 mm ERA Implant® is approved by the FDA for permanent application.
- Titanium alloy implant with titanium nitride hardened head, nylon male.
- Six color-coded males to create a consistent level of retention (white, orange, blue, grey, yellow and red).
- Optional ERA® Metal Jacket holds the attachment male in the denture base and is sold pre-loaded with a black fabrication male.
- Available lengths: 10, 13 & 15 mm.
- Available cuff heights: 2 & 3 mm.
- Delivered sterile in individual packages.
- Both use the Micro ERA® female.
- Acid etched implant surface.

ERA[®] IMPLANT

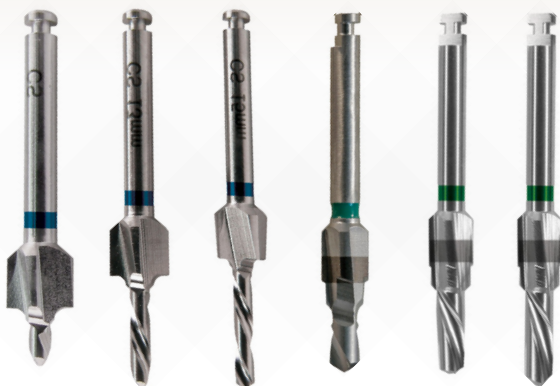


Body diameter	2.2mm	2.2mm
Cuff Height	2.0mm	3.0mm
10mm length	922377	922378
13mm length	922381	922382
15mm length	922385	922386

ERA[®] IMPLANT



Body diameter	3.25mm	3.25mm
Cuff Height	2.0mm	3.0mm
10mm length	902523	902524
13mm length	902527	902528
15mm length	902531	902532



10mm 2.2 Countersink/Drill-Micro
13mm 2.2 Countersink/Drill-Micro
15mm 2.2 Countersink/Drill-Micro
10mm 3.25 Countersink/Drill-Micro
13mm 3.25 Countersink/Drill-Micro
15mm 3.25 Countersink/Drill-Micro

905270
905271
905272
905517
905518
905519



INSERTION TOOL - MICRO
905274



ERA® SOCKET INSERT - MICRO 30°
905340

1.6 MM TWIST DRILL

905140



**ERA® IMPLANT ABUTMENT DRIVER,
LATCH STYLE, MICRO**

905279



RATCHET WRENCH, SHORT, SS
905105



ERA® IMPLANT BONE TAPS

- 2.2 Bone Tap
- 3.25 Bone Tap

905142
905521



GRADUATED TORQUE WRENCH 905738

- The final turn or two of the implant placement may be done by hand, using a torque wrench at a maximum value of 55 Ncm.



ROUND MARKING BUR

- Used to mark implant site.

905091



DRILL EXTENSION

- Attaches to standard latch-type handpiece.
- Use to gain access when implant site is adjacent to natural teeth.
- Made of high-strength stainless steel.

905280



TISSUE PUNCH, 4 MM
905115

TISSUE PUNCH, 5 MM
905116



IMPLANT DEPTH PROBE

905073

- Use for measuring depth of surgical implant site.
- Marked as 7, 8, 10, 13, 15, 18 and 20mm.

ERA® ANGLE GAUGE



811186	0°
811187	5°
811188	11°
811189	17°





ERA® MICRO OVERDENTURE BASIC PROSTHETIC KIT

811911

Kit Contains: 1 core cutter, 1 seating tool, 4 Micro-Alignment Handles, 4 Micro- Processing Jigs, 10 ea ERA-Micro Overdenture black, white, orange males, and 5 ea ERA® Micro Overdenture Metal Jackets



ERA® MICRO SEATING TOOL 811022



ERA® MICRO ABUTMENT TOOL KIT

811907

Kit Contains: 1 Thumb Knob, 1 ERA Socket-Micro Short, 1 Core Cutter- Micro, 1 Seating Tool - Micro, and Alignment Handles (2) -Micro.



ERA® IMPLANT ABUTMENT MICRO MALE PACKAGE COMPLETE

811008

Contents: ERA Micro Ovd. Metal Jacket (preloaded with black fabrication male), White Male, Orange Male and block out spacer



ERA® MICRO OVERDENTURE PROCESSING JIG 811042



MICRO DENTIST TOOL KIT

811026

- Core cutter bur and seating tool.
- Self-limiting Core Cutting bur for use in straight handpieces.
- Seating tool allows for easy handling of males.



ERA® MICRO OVERDENTURE METAL JACKET WITH FABRICATION MALE 811043



ERA® MICRO ALIGNMENT HANDLE, 2

811456



ERA® MICRO CORE CUTTER BUR

811023



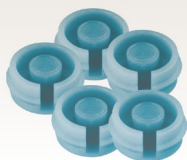
ERA PROCESSING MALE, MICRO ERA® Micro Overden- ture Males, Black, 5 811035



ERA® Micro Overdenture Males, White, 5
811036



ERA® Micro Overdenture Males, Orange, 5
811037



ERA® Micro Overdenture Males, Blue, 5
811038



ERA® Micro Overdenture Males, Grey, 5
811039



ERA® Micro Overdenture Males, Yellow, 5
811040



ERA® Micro Overdenture Males, Red, 5
811041



ERA® Micro Overdenture males, Assorted, 7
811029
(1 each: black, white, orange, blue, grey,
yellow and red)

ERA® Micro Female



811212	0°
811213	5°
811214	11°
811215	17°
811252	23°
811253	30°



Micro ERA Overdenture Impression Coping
811236

ERA® Lock Cement
811900



ERA® Slot Expander
905217

EZ PickUp® Attachment Processing Material

Tissue-colored, automixing, self-curing attachment processing material.

- Odorless.
- Low curing temperature.
- Less than 1 percent shrinkage resulting in a more accurate and complete pickup of the attachment.
- When used with the ERA Implant System, it will not irritate freshly sutured tissue like methyl methacrylate will.
- Can be used to pick up any attachment.
- EZ PickUp® will chemically bond to acrylic only if a primer is used. Use SternVantage® Varnish LC as a primer for acrylic.



EZ PickUp®, Syringe, Tips & Varnish

1 syringe @ 15 grams, 15 Tips and 5.0ml Varnish

220237

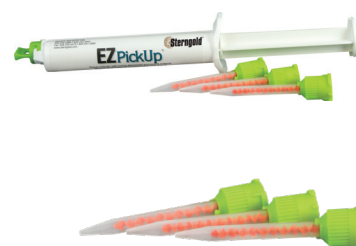
EZ PickUp®, Syringe & Tips

1 syringe @ 15 grams and 15 Tips

220235

EZ PickUp® Tips (15)

220233



SternVantage® Varnish LC 5ml

220232

SternVantage® Varnish LC is a light cure one-component surface coating material based on acrylates and cures without a smear layer caused by oxygen inhibition.

- Solvent and stain resistant.
- Ultra-dry finish with a smooth surface.
- Produces a high gloss and hard surface with no polishing necessary.





Quickline® Soft-Reline material

QuickLine®, the long-term soft relining material, can be directly applied from its automix cartridge. The self-curing silicones allow for easy working, either using a direct or indirect lining procedure. Adhesion to the usual PMMA based materials for dentures is achieved by a specially developed highly active primer.

- Biocompatible, no methyl methacrylate.
- Tasteless and odorless.
- Requires no extra work in the laboratory.
- Automixing cartridge delivery system for fast, easy and mess-free application.
- Permanently soft for increased patient comfort.
- Self-curing.
- Color stable.
- Can be used on any standard resin for prosthetics.
- Dispenses with 1:1/2:1 Dispensing Gun.

Quickline® - Introductory Kit 220180

1 cartridge (50 ml) QuickLine, 12 mixing tips, 2 bottles (10ml) (base and catalyst) Varnish, 1 bottle Primer (5 ml), 25 brushes, 1 mixing palette

Quickline® refill 220181

1 cartridge QuickLine™ @ 50 ml, 12 mixing tips

Quickline® primer 220183

1 bottle Primer, 5 ml

- Easy to use.
- Quick set up solvent evaporates in 1 minute.
- Provides adhesion between PMMA based material used for dentures and self-curing silicone.

Quickline® Varnish 220182

2 bottles (base and catalyst), 10 ml each, 25 brushes, 1 mixing palette

- Easy to use.
- Provides a glossy and lasting surface.
- Reduces plaque retention.
- Reduces stain and odor build-up.
- Reapplicable for extended use.
- Quick drying time (5 minutes).

Quickline® mixing tips (50) 220162



ASEPTICO SURGICAL MOTOR

Aseptico AEU 6000 SAU Implant Surgery Unit w/AE-70v Footswitch

915283



STERNGOLD DENTAL, LLC

23 FRANK MOSSBERG DRIVE
ATTLEBORO, MA 02703 USA

+1.800.243.9942 / +1.508.226.5660

WWW.STERNGOLD.COM



*STERNGOLD DENTAL, LLC IS NOT RESPONSIBLE FOR ANY TECHNICAL INACCURACIES OR TYPOGRAPHICAL ERRORS. STERNGOLD MAY MAKE CHANGES TO THE CONTENT AND THE PRODUCT IMAGES ANY TIME WITHOUT NOTICE. THE IMAGES PORTRAYED IN THIS CATALOG DO NOT REPRESENT ACTUAL SIZE.